



obp
MOTORSPORT TM

**PRODUCT
CATALOGUE
2020**



Welcome to the 2020 Vision,

2020 is a defining year for obp Motorsport as we have some very exciting announcements to make.

Since our humble beginnings in 2007 we have seen unprecedented growth throughout the business both through OEM clients and also Professional Race Teams.

2020 brings new leadership, new products and new business model. From 2020 we are supplying our products exclusively through our Worldwide Partner Network, this network has been loyal to us throughout our growth and we have selected the best in the business to look after our clients. My management team and I are a young dynamic team with our focus on the product and our customers.

We pride ourselves on delivering excellent service to each and every one of our clients, and my door is always open for any feedback you may have about our products or service.

This year we have the Launch of our E-Sports Pedal System bringing real world motorsport technology to the simulator world. The growth of E-Sports over the past 24 months has been insane, even seeing the likes of Lando Norris rise to fame in Formula 1 as a "new-age" racing driver.

I truly look forward to working with you over the years to come.

James Oliver
Director of Motorsport

PEDAL SYSTEMS

Pro-Race V3	4
Pro-Race V2	5
Pro-Race V2 Accessories	6
Track-Pro V2	9
Track-Pro V2 Accessories	9
Pro-EV V2	10
Pro-EV V2 Accessories	11
Victory Range	12
Track Pro Vehicle Specific	14
Track Pro Universal Fitment	14
Classic Mini	15
Kit Car	16
Servo Replacement Systems	17
E-Sports Pro-Race V2	18

HANDBRAKES

Pro-Drift V3	19
Pro-Drift V2	20
Victory Range	21

ANCILLARIES

DARK MATTER

Dark Matter Foot Rests, Battery Brackets, Oil Catch Tanks	26
Dark Matter Dry Sump Tank, Fuel Swirl Pots, Round Header Tanks, Power Steering Reservoirs	27

TOP MOUNTS

ALUMINIUM PRODUCTS

Fuel Swirl Pots, Water Swirl Pots	29
Aluminium Baffled Fuel Tanks - Push Fittings	30
Aluminium Baffled Fuel Tanks - JIC Fittings	31
Foam Filled Aluminium Fuel Tanks	32
Kit Car Aluminium Fuel Tanks	33
Fuel Tank Foam	33

OIL COOLERS

OIL CATCH TANKS

WATER HEADER & DRY SUMP TANKS

SEAT BRACKETS & RADIATOR CAPS

BATTERY BRACKETS

SELF WELD PARTS

FOOT RESTS & ROOF VENTS

PIT EQUIPMENT

DISTRIBUTOR LIST

TERMS & CONDITIONS



PRO-RACE V3

// UNIVERSAL FITMENT

// DARK MATTER
COATING COMING FROM
JANUARY 2020

// PRO-RACE V3 PEDAL SYSTEMS

The Pro-Race V3 – Our Flagship Pedal System. The pinnacle of engineering, which can be universally mounted for any Motorsport application. With an ergonomic design, manufactured from Aircraft Grade T6061 Aluminium and incredible build quality.

- Anodized Aircraft Grade T6061 Aluminium Construction
- Ergonomic Fit
- Multiple Pedal Pad Adjustment
- Adjustable Pedal Ratios
- Adjustable Accelerator Return
- Drive-By-Wire Compatible (DBW)

01. Pro-Race V3 Floor Mounted Bulkhead Fit 3 Pedal System

Hydraulic Clutch.

Kit Content: 1 x Pedal Box (OBPPRV301), 1 x Bias Bar (OBPCB010)
Part No: **OBPPRV302**

02. Pro-Race V3 Floor Mounted Cockpit Fit 3 Pedal System

Hydraulic Clutch.

Kit Content: 1 x Pedal Box (OBPPRCV301), 1 x Bias Bar (OBPCB010)
Part No: **OBPPRCV302**



Baggsy's LSXR35



PRO-RACE V2

// UNIVERSAL FITMENT

// PRO-RACE V2 PEDAL SYSTEMS

The Pro-Race V2 – The Original Pedal System. Designed for the professional and semi-professional teams and drivers, which can be universally mounted for any Motorsport application. The mix of Mild Steel Cradle and Aircraft Grade T6061 Aluminium Pedals, allows for excellent rigidity, enhanced feel and bullet proof construction.

- Aircraft Grade T6061 Aluminium Pedals
- Mild Steel Cradle Construction
- Multiple Pedal Pad Adjustment
- Adjustable Pedal Ratios
- Adjustable Accelerator Return
- Drive-By-Wire Compatible (DBW)
- Now with Dark Matter Coating

01. Pro-Race V2 Floor Mounted Bulkhead Fit 3 Pedal System

Hydraulic Clutch.

Kit Content: 1 x Pedal Box (OBP0001PR), 1 x Bias Bar (OBPCB010)
Part No: **OBP0002PR**

02. Pro-Race V2 Top Mounted Bulkhead Fit 3 Pedal System

Hydraulic Clutch.

Kit Content: 1 x Pedal Box (OBP0001PRT), 1 x Bias Bar (OBPCB010)
Part No: **OBP0002PRT**



Jack Shanahan's GT86



FOR INSTALLATION
INSTRUCTIONS,
GO TO OUR WEBSITES
"HELP SHEETS" SECTION

TESTIMONIAL

The level of detail on the Pro-Race V3 Pedal System is simply beautiful.

Revline Racing
Sweden



+44 (0)1487 812 301



sales@obpltd.com



obpltd.com



+44 (0)1487 812 301



sales@obpltd.com



obpltd.com

PRO-RACE V2

// UNIVERSAL FITMENT

// PRO-RACE V2 PEDAL SYSTEMS

01. Pro-Race V2 Floor Mounted Cockpit Fit 3 Pedal System

Hydraulic Clutch.

Kit Content: 1 x Pedal Box (OBP0001PRC), 1 x Bias Bar (OBPCB010)

Part No: **OBP0002PRC**

02. Pro-Race V2 Top Mounted Cockpit Fit 3 Pedal System

Hydraulic Clutch.

Kit Content: 1 x Pedal Box (OBP0001PRTC), 1 x Bias Bar (OBPCB010)

Part No: **OBP0002PRTC**

FOR INSTALLATION
INSTRUCTIONS,
GO TO OUR WEBSITES
"HELP SHEETS" SECTION

TESTIMONIAL

One of my favourite parts on my car is the obp Motorsport Pedal System, probably the best engineering I have ever seen!

Shawn Bassett

USA

★★★★★

PRO-RACE V2

// UNIVERSAL FITMENT

// PRO-RACE V2 PEDAL SYSTEM ACCESSORIES

01. Pro-Race V2 Floor Mounted Bulkhead Fit Strength Plate

Part No: **OBP0099PR**

02. Large (78mm) Brake Pedal Pad Upgrade for Pro-Race V2 and Track-Pro V2

Part No: **OBPPED4W**

PRO-RACE V2

// UNIVERSAL FITMENT

// PRO-RACE V2 PEDAL SYSTEMS

01. Pro-Race V2 Floor Mounted Bulkhead Fit 2 Pedal System (Brake & Clutch)

Hydraulic Clutch.

Kit Content: 1 x Pedal Box (OBP0160PR), 1 x Bias Bar (OBPCB010)

Part No: **OBP0161PR**

02. Pro-Race V2 Top Mounted Bulkhead Fit 2 Pedal System (Brake & Clutch)

Hydraulic Clutch.

Kit Content: 1 x Pedal Box (OBP0160PRT), 1 x Bias Bar (OBPCB010)

Part No: **OBP0161PRT**

FOR ANCILLARY
PRODUCTS, PLEASE
SEE PAGES 24-25

03. Pro-Race V2 Floor Mounted Cockpit Fit 2 Pedal System (Brake & Clutch)

Hydraulic Clutch.

Kit Content: 1 x Pedal Box (OBP0160PRC), 1 x Bias Bar (OBPCB010)

Part No: **OBP0161PRC**

04. Pro-Race V2 Top Mounted Cockpit Fit 2 Pedal System (Brake & Clutch)

Hydraulic Clutch.

Kit Content: 1 x Pedal Box (OBP0160PRT), 1 x Bias Bar (OBPCB010)

Part No: **OBP0161PRTC**

+44 (0)1487 812 301



sales@obpltd.com



obpltd.com



+44 (0)1487 812 301



sales@obpltd.com

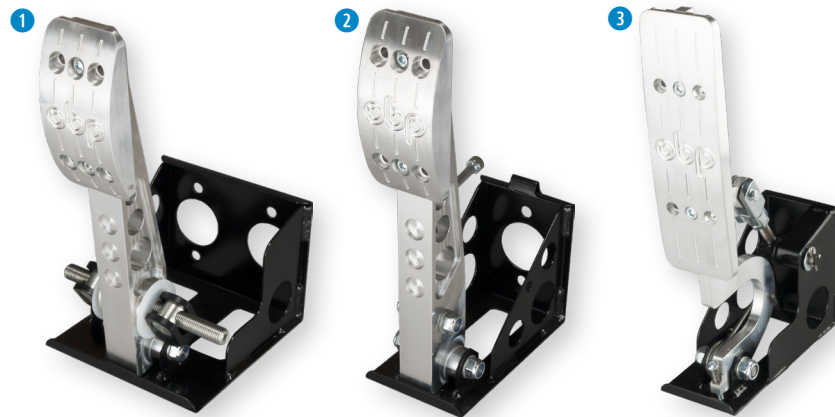


obpltd.com

PRO-RACE V2

// UNIVERSAL FITMENT

// PRO-RACE V2 FLOOR MOUNTED BULKHEAD FIT, 1 PEDAL UNITS



// PRO-RACE V2 TOP MOUNTED BULKHEAD FIT, 1 PEDAL UNITS



// PRO-RACE V2 FLOOR MOUNTED COCKPIT FIT, 1 PEDAL UNITS



// PRO-RACE V2 TOP MOUNTED COCKPIT FIT, 1 PEDAL UNITS



01. Pro-Race V2 Floor Mounted Bulkhead Fit, 1 Pedal Bias Unit (Brake)

Part No: OBP0040PR

02. Pro-Race V2 Floor Mounted Bulkhead Fit, 1 Pedal Unit (Clutch)

Part No: OBP0045PR

03. Pro-Race V2 Floor Mounted Bulkhead Fit, 1 Pedal Unit (Accelerator)

Part No: OBP0047PR

04. Pro-Race V2 Top Mounted Bulkhead Fit, 1 Pedal Bias Unit (Brake)

Part No: OBP0040PRT

05. Pro-Race V2 Top Mounted Bulkhead Fit, 1 Pedal Unit (Clutch)

Part No: OBP0045PRT

06. Pro-Race V2 Top Mounted Bulkhead Fit, 1 Pedal Unit (Accelerator)

Part No: OBP0047PRT

07. Pro-Race V2 Floor Mounted Cockpit Fit, 1 Pedal Bias Unit (Brake)

Part No: OBP0040PRC

08. Pro-Race V2 Floor Mounted Cockpit Fit, 1 Pedal Unit (Clutch)

Part No: OBP0045PRC

09. Pro-Race V2 Top Mounted Cockpit Fit, 1 Pedal Bias Unit (Brake)

Part No: OBP0040PRTC

10. Pro-Race V2 Top Mounted Cockpit Fit, 1 Pedal Unit (Clutch)

Part No: OBP0045PRTC

FOR ANCILLARY PRODUCTS, PLEASE SEE PAGES 24-25

TRACK PRO V2

// UNIVERSAL FITMENT

// TRACK PRO V2 PEDAL SYSTEM

New for 2019, The V2 Track Pro Pedal System combines the engineering from the Pro-Race V2 Pedal System along with the Cradle Design from the Track Pro System. With an angled cradle to fit to the floor pan with ease.

- Aircraft Grade T6061 Aluminium Pedals
- Mild Steel Cradle Construction
- 5.05:1 to 5.45:1 Pedal Ratio
- Adjustable Pedal Ratios
- Multiple Pedal Pad Adjustment
- Adjustable Accelerator Return
- Drive-By-Wire Compatible (DBW)
- Now with Dark Matter Coating

01. Track-Pro V2 Floor Mounted, 3 Pedal System

Kit Content: 1 x Pedal Box (OBP0330), 1 x Bias Bar (OBPCB010)

Part No: OBP0331

FOR INSTALLATION INSTRUCTIONS, GO TO OUR WEBSITES "HELP SHEETS" SECTION

// TRACK-PRO V2 PEDAL SYSTEM ACCESSORIES



02. Aluminium Heel Rest

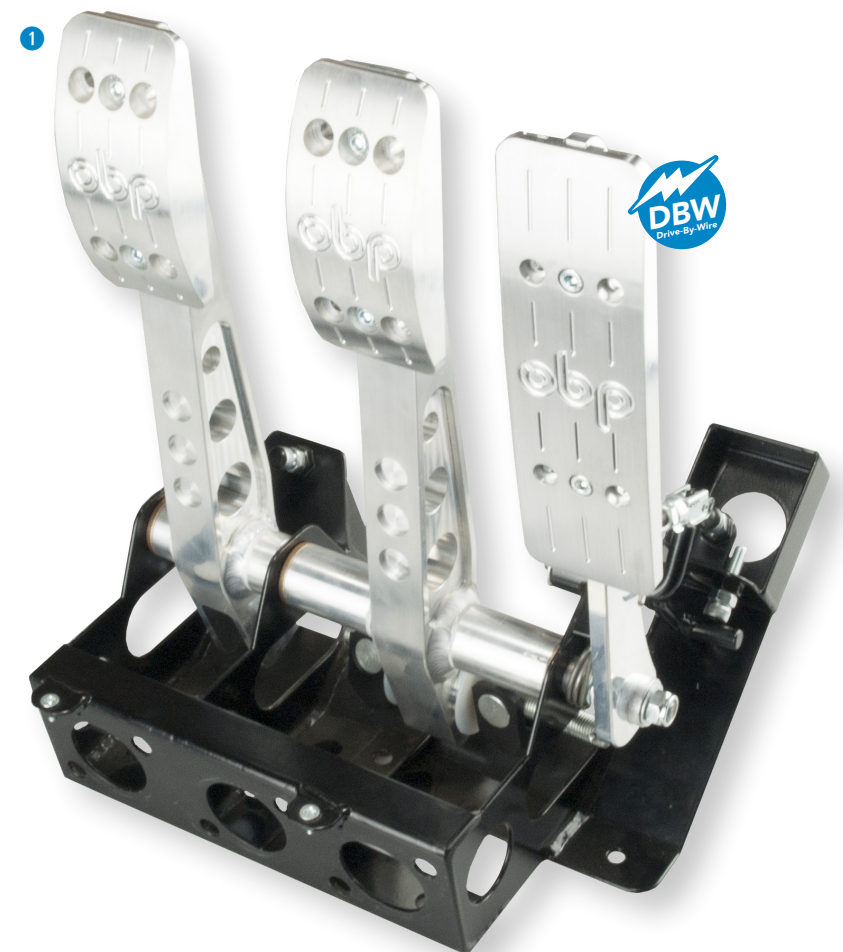
For use with OBP0331

Part No: OBP0339

03. Large (78mm) Brake Pedal Pad

Upgrade for Pro-Race V2 and Track-Pro V2

Part No: OBPPED4W



TESTIMONIAL

obp Motorsport have supported me over the years and I always use their products in my builds!

Steve "Baggsy" Biagioni
Monster Energy Athlete

PRO-EV V2

// ELECTRIC VEHICLE

NEW //FOR 2020

// PRO-EV V2 PEDAL SYSTEMS

The Pro-EV V2 Pedal System takes the engineering from the Pro-Race V2 Pedal System and specifically alters it for tailored use with Electric and Automatic Vehicles.

Our lightweight range dual brake master cylinder bias controlled pedal boxes have been designed to offer the driver the highest level of efficiency in this critical area.

The ergonomic fabricated pedals, together with low friction and high-quality oil impregnated spherical bearings set new standards in pedal box design.

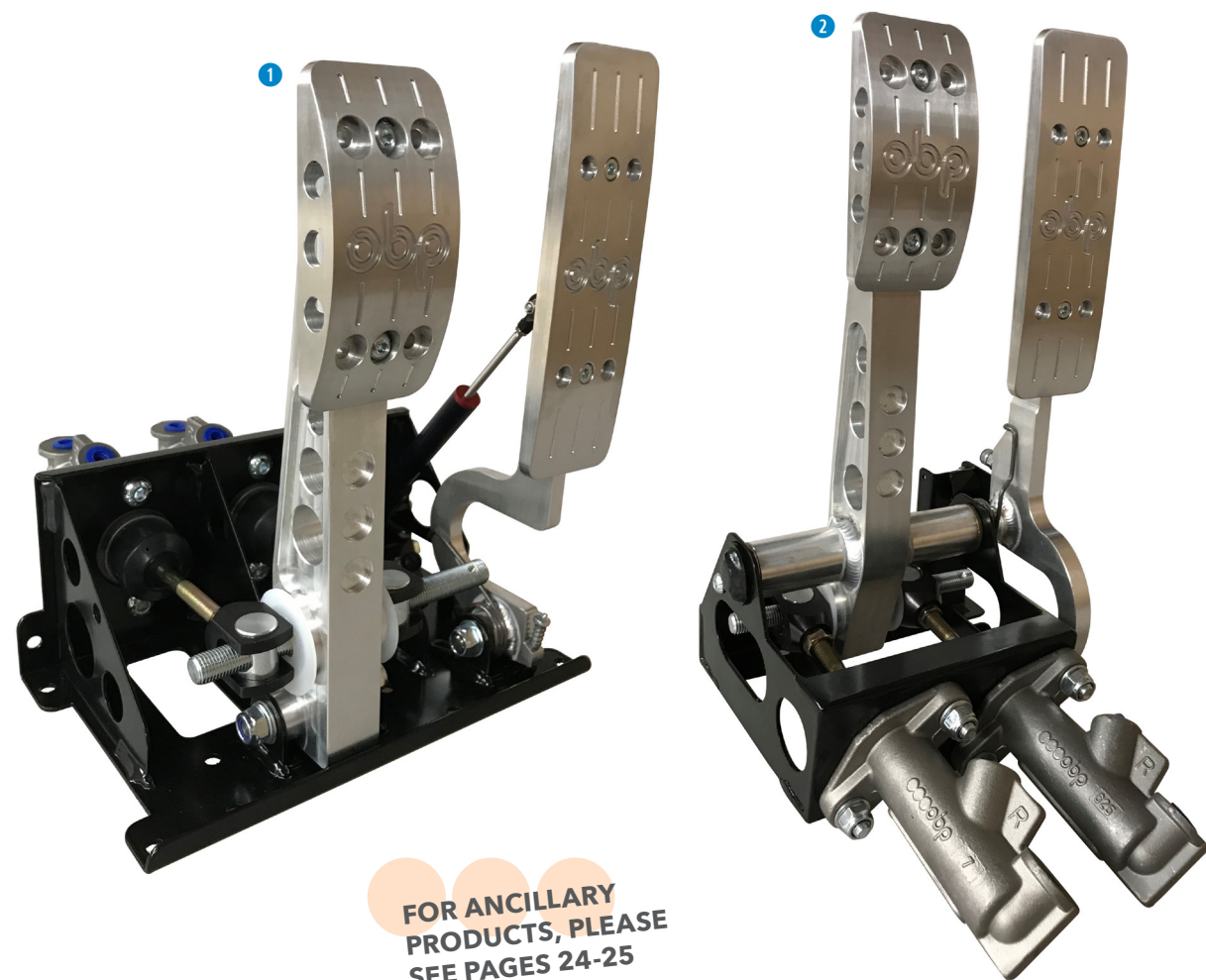
- Aircraft Grade T6061 Aluminium Pedals
- Multiple Pedal Pad Adjustment
- Adjustable Accelerator Return
- Mild Steel Cradle Construction
- Adjustable Pedal Ratios
- Drive-By-Wire Compatible

01. Pro-EV V2 Floor Mounted Bulkhead Fit 2 Pedal System (Accelerator & Brake)

Part No: OBP-PR-EV02

02. Pro-EV V2 Floor Mounted Cockpit Fit 2 Pedal System (Accelerator & Brake)

Part No: OBP-PRC-EV02



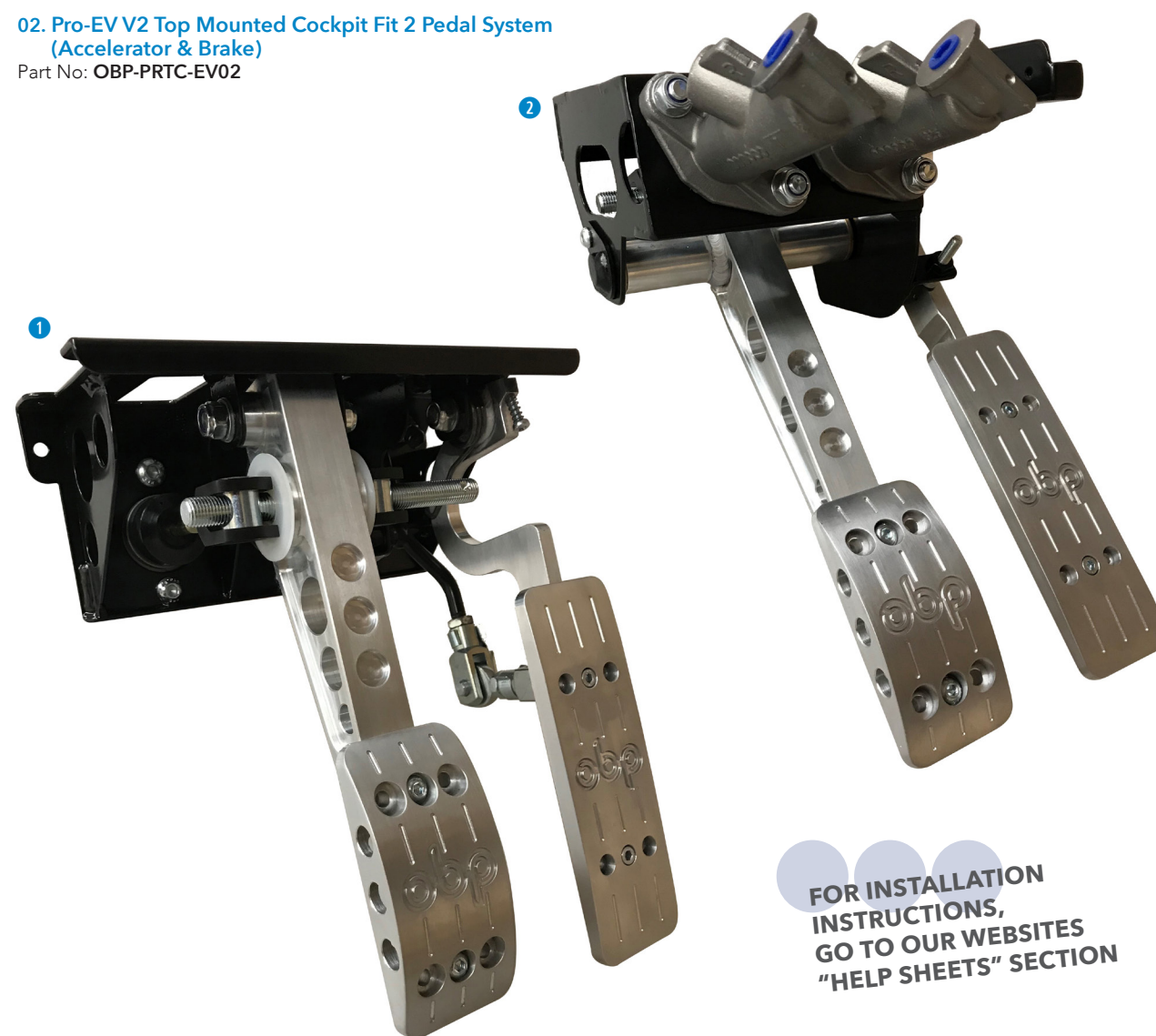
FOR ANCILLARY PRODUCTS, PLEASE SEE PAGES 24-25

01. Pro-EV V2 Top Mounted Bulkhead Fit 2 Pedal System (Accelerator & Brake)

Part No: OBP-PRT-EV02

02. Pro-EV V2 Top Mounted Cockpit Fit 2 Pedal System (Accelerator & Brake)

Part No: OBP-PRTC-EV02



FOR INSTALLATION INSTRUCTIONS, GO TO OUR WEBSITES "HELP SHEETS" SECTION

PRO-EV V2

// ELECTRIC VEHICLE

// PRO-EV V2 PEDAL SYSTEM ACCESSORIES

01. Cable Throttle Linkage

For OBP-PR-EV02

Part No: OBPPRL001

02. Cable Throttle Linkage

For OBP-PRT-EV02

Part No: OBPPRTL001

03. DBW Throttle Upgrade

For OBP-PR-EV02

Part No: OBP-PR-POT2

04. DBW Throttle Upgrade

For OBP-PRC-EV02

Part No: OBP-PRC-POT2

05. DBW Throttle Upgrade

For OBP-PRT-EV02

Part No: OBP-PRT-POT2

06. DBW Throttle Upgrade

For OBP-PRTC-EV02

Part No: OBP-PRTC-POT2

NEW //FOR 2020

VICTORY

// CLUBMAN RANGE

// VICTORY RANGE PEDAL SYSTEMS

The Victory Range of products have been designed for the Clubman race teams and drivers. These products have been produced by obp Motorsport since the beginning, and have been improved to work with the current demanding environments in Motorsport.

- Mild Steel Construction
- Ergonomic Design
- Now with Dark Matter Coating
- Folded and Re-Enforced Pedals
- UK Designed and Manufactured
- Universal Fit

01. Victory + Floor Mounted Bulkhead Fit 3 Pedal System

Kit Content: 1 x Bias Bar (OBPCB010), 1 x Clevis (OBPCB005s)
Part No: **OBPVIC01**

02. Victory + Top Mounted Bulkhead Fit 3 Pedal System

Kit Content: 1 x Bias Bar (OBPCB010), 1 x Clevis (OBPCB005s)
Part No: **OBPVIC04**

03. Victory + Floor Mounted Cockpit Fit 3 Pedal System

Kit Content: 1 x Bias Bar (OBPCB010), 1 x Clevis (OBPCB005s)
Part No: **OBPVIC40**



FOR INSTALLATION
INSTRUCTIONS,
GO TO OUR WEBSITES
"HELP SHEETS" SECTION

FOR ANCILLARY
PRODUCTS, PLEASE
SEE PAGES 24-25

VICTORY

// CLUBMAN RANGE

01. Victory Top Mounted Cockpit Fit 3 Pedal System

Kit Content: 1 x Bias Bar (OBPCB010), 1 x Clevis (OBPCB005s)
Part No: **OBPVIC19**

02. Victory Floor Mounted Cockpit Fit 3 Pedal System

Kit Content: 1 x Bias Bar (OBPCB010), 1 x Clevis (OBPCB005s)
Part No: **OBPVIC13**

03. Victory Floor Mounted Bulkhead Fit 1 Pedal Bias Unit (Brake)

Kit Content: 1 x Bias Bar (OBPCB010)
Part No: **OBPVIC32**



Titans-RX Europe

TESTIMONIAL

obp Motorsport have supported us throughout the 2019 Season, which has been an iconic year for the British Drift Championship.

There products are second to none and the team are always on call to help with any technical questions.

Matt Stevenson
British Drift Championship
★★★★★



+44 (0)1487 812 301



sales@obpltd.com



obpltd.com



+44 (0)1487 812 301



sales@obpltd.com



obpltd.com

TRACK PRO

// VEHICLE SPECIFIC

// TRACK-PRO BMW PEDAL SYSTEMS

The Multi Fitment Track Pro Pedal System has an adjustable Bias System. Our innovative, easy to install design utilises the vehicle's original floor plan to mount the Pedal System. Using the fixing points there is minimum welding and cutting required to install the system.

- Mild Steel Construction
- 5:1 Pedal Ratio
- Now with Dark Matter Coating
- Folded and Re-Enforced Pedals
- UK Designed and Manufactured

Track-Pro BMW E36, Floor Mounted 3 Pedal System

Hydraulic Clutch.

Kit Content: 1 x Pedal Box (OBPBMW001), 1 x Bias Bar (OBPCB010)

01. Right Handed. Part No: OBPBMW002 02. Left Handed. Part No: OBPBMWL002



TRACK PRO

// UNIVERSAL FITMENT

// TRACK PRO UNIVERSAL PEDAL SYSTEM

This Track-Pro multi fit unit is designed to fit a wide range of cars.

Suitable For:

Citroen Saxo / Xsara, Ford Escort / Fiesta / Focus / Ka, Honda Civic, Peugeot 106 / 205, Suzuki Swift, Vauxhall Nova / Corsa

Codes:

for each type of car replace XY for:

Citroen Saxo - CS / Xsara - CX, Ford Fiesta - FI / Escort - FE / Focus - FF / KA - FK, Honda Civic - HC, Peugeot 106 - PE1/206 - PE2, Suzuki Swift - SU, Vauxhall Nova - VN / Corsa - VC

03. Universal Fit Floor Mounted 3 Pedal Hydraulic Clutch

Kit Content: 1 x Pedal Box (OBPXY001), 1 x Bias Bar (OBPCB010)

Part No: OBPXY002



FOR INSTALLATION
INSTRUCTIONS,
GO TO OUR WEBSITES
"HELP SHEETS" SECTION

// CLASSIC MINI PEDAL SYSTEM

The Classic Mini Pedal System has been developed with Mini Specialists from around Europe. In doing this we have created a high performance, easy to fit system specifically for the Classic Mini Chassis. Giving the driver full control on the braking from front to rear.

- Mild Steel Construction
- 5.5:1 Pedal Ratio
- Now with Dark Matter Coating
- Folded and Re-Enforced Pedals
- Cockpit Facing Cylinders
- Steering Column Avoidance Design

01. Classic Mini Top Mounted 3 Pedal System

Kit Content: 1 x Pedal Box (OBP0300), 1 x Bias Bar (OBPCB010)

Part No: OBP0301

TESTIMONIAL

*obp Motorsport
are a great company
to work with,
they sell a vast range
of products with
fantastic service
to match.*

*I use the Classic
Mini Pedal System
in my race car and
it works perfectly.*

Elbert Baas
Netherlands
★★★★★



Charlie Budd's Mini Se7en

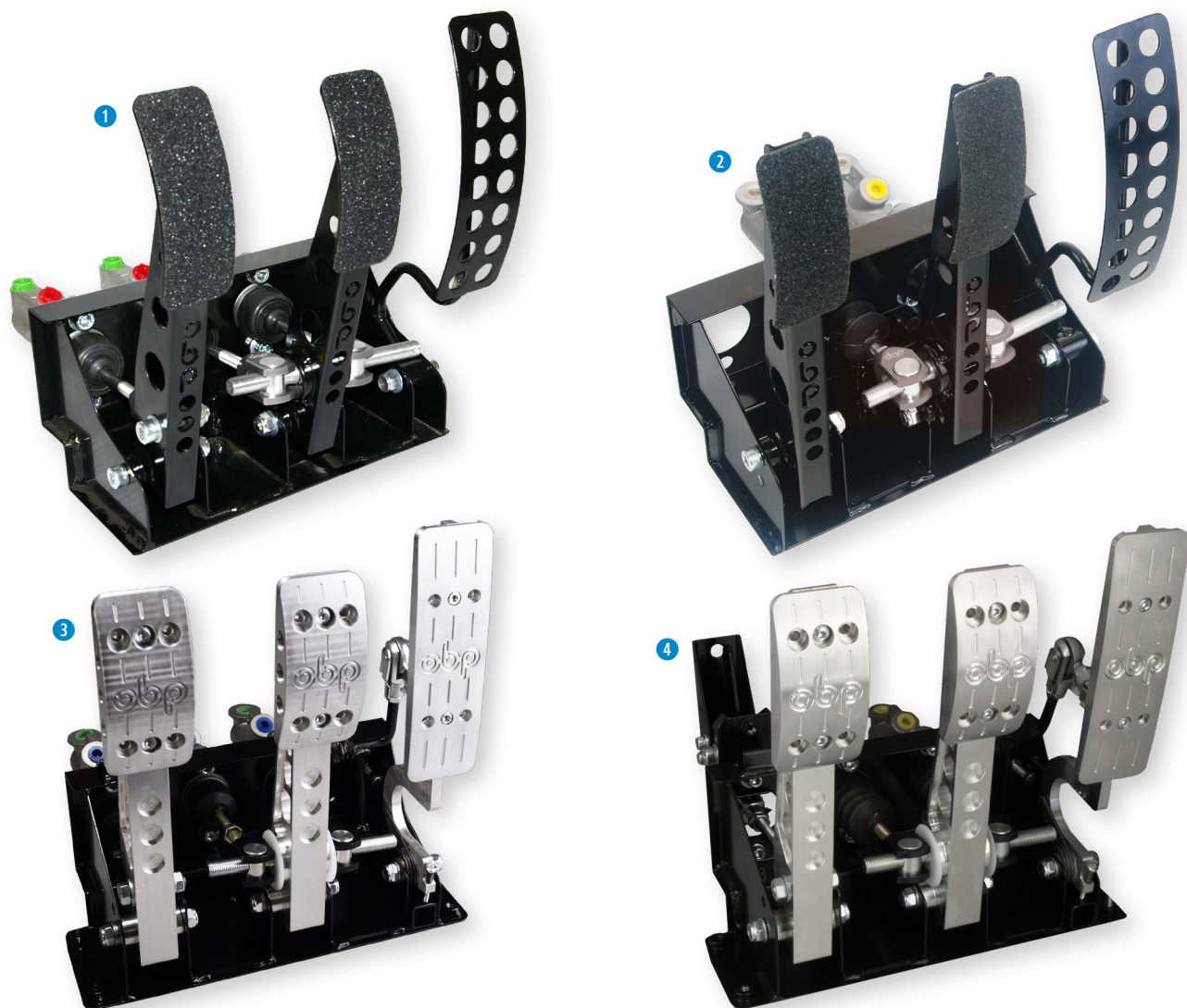


FOR ANCILLARY
PRODUCTS, PLEASE
SEE PAGES 24-25

// KIT CAR PEDAL SYSTEMS

The Kit Car Pedal System is specifically designed to work in most space frame chassis Kit Cars with a Bulk Head. This system comes with a 25mm x 25mm cut out in the rear of the cradle, to fit over the bottom rail in the driver's foot well. Supplied with Nylock Nuts for the Bias Bar assembly to meet IVA Regulations.

- V2 Aircraft Grade T6061 Aluminium Pedals
- 240mm Wide
- Now with Dark Matter Coating
- Bulkhead Facing Cylinders
- Conforms to IVA Regulations



01. Victory + Kit Car Floor Mounted 3 Pedal System (Hydraulic Clutch)

Folded and reinforced mild steel pedals.

Kit Content: 1 x Pedal Box (Hydraulic Clutch), 1 x Bias Bar (OBPCB010), 2 x 5/16 Locknuts, 1 x M/Cylinder (OBPCB001), 1 x Clevis + Bolt Kit, 1 x M/Cylinder (OBPCB002), 1 x M/Cylinder (OBPCB003)
Part No: **OBPKC001**

02. Victory + Kit Car Floor Mounted 3 Pedal System (Cable Clutch)

Folded and reinforced mild steel pedals.

Kit Content: 1 x Pedal Box (Cable Clutch), 1 x Bias Bar (OBPCB010), 2 x 5/16 Locknuts, 1 x M/Cylinder (OBPCB001), 1 x Clevis + Bolt Kit, 1 x M/Cylinder (OBPCB002)
Part No: **OBPKC011**

03. Pro-Race V2 Kit Car Floor Mounted 3 Pedal System (Hydraulic Clutch)

V2 Premium aluminium pedals.

Kit Content: 1 x Pedal Box (Hydraulic Clutch), 1 x Bias Bar (OBPCB010), 2 x 5/16 Locknuts, 1 x M/Cylinder (OBPCB001), 1 x Clevis + Bolt Kit, 1 x M/Cylinder (OBPCB002), 1 x M/Cylinder (OBPCB003)
Part No: **OBPKCP101**

04. Pro-Race V2 Kit Car Floor Mounted 3 Pedal System (Cable Clutch)

V2 Premium aluminium pedals.

Kit Content: 1 x Pedal Box (Cable Clutch), 1 x Bias Bar (OBPCB010), 2 x 5/16 Locknuts, 1 x M/Cylinder (OBPCB001), 1 x Clevis + Bolt Kit, 1 x M/Cylinder (OBPCB002), 1 x Cable Mechanism (OBPCCPR)
Part No: **OBPKCP101C**

NEW //FOR 2020

// V2 UNIVERSAL FITMENT SERVO REPLACEMENT SYSTEMS

Our V2 Universal Fitment Servo Replacement replaces the original Servo Unit, you will be required to Mark and Drill the Universal Fitment Plate for installation.

The kit is fitted with a brake balance bar which allows you to alter the brake bias to suit your driving style or track conditions.

Designed to take 2 Master Cylinders with 2.25" hole centres which are sold separately, please see page 24.

- Fits with Existing Pedal
- Allows Adjustment of Brake Bias
- Universal Fit - Mark & Drill
- Aircraft Grade T6061 Aluminium

01. Performance V2 Universal Fitment Servo Replacement System

Comes with Adjustable Pedal Connecting Rod and Bias Bar.
Part No: **OBP-SRV2-01**

02. Super Light V2 Universal Fitment Servo Replacement System

Comes with Adjustable Pedal Connecting Rod and Bias Bar.
Part No: **OBP-SRV2-02**



FOR ANCILLARY PRODUCTS, PLEASE SEE PAGES 24-25

“ TESTIMONIAL

obp Motorsport are one of the most up and coming brands here in the USA, this is due to great products, extensive knowledge and great customer care.

Bart Hockerman
Pegasus Auto Racing
★★★★★



// E-SPORTS PRO-RACE V2 PEDAL SYSTEMS

New for 2020. Over a Decade of Proven Real-World Motorsport Winning Success & Engineering Expertise has been packaged into the obp E-Sports Pro-Race V2 Pedal Assemblies.

Due to our extensive knowledge in Motorsport the obp E-Sports Pedal Assemblies deliver fantastic feedback from all three pedals for a Professional Realistic Motorsport Simulation Experience.

- Aircraft Grade T6061 Aluminium Pedals
- Mild Steel Cradle Construction
- Adjustable Pedal Ratios
- Multiple Pedal Pad Adjustment
- Adjustable Accelerator Return

01. obp E-Sports Pro-Race V2 3 Pedal System (Hydraulic Technology)

Product Content: Slave Cylinder Carrier, Master Cylinders, Slave Cylinders, High-Quality Spring Rubber, St/St Braided Hose Set, Pressure Sensor & Adaptor and PC Control Board & Case
Part No: **OBP-SIMPB-01**

02. obp E-Sports Pro-Race V2 3 Pedal System (Hydraulic Technology) (Black)

Product Content: Slave Cylinder Carrier, Master Cylinders, Slave Cylinders, High-Quality Spring Rubber, St/St Braided Hose Set, Pressure Sensor & Adaptor and PC Control Board & Case
Part No: **OBP-SIMPB-01B**



NEW //FOR **2020**

PRO-DRIFT V3

// HYDRAULIC HANDBRAKE

// PRO-DRIFT V3 HYDRAULIC HANDBRAKES

The Pro-Drift V3 – Our Flagship Hydraulic Handbrake. The pinnacle of engineering, which can be universally mounted for any Motorsport application. With an ergonomic design, manufactured from Aircraft Grade T6061 Aluminium and incredible build quality. The Pro-Drift V3 is the only choice for serious contenders.

- Anodized Aircraft Grade T6061 Aluminium Construction
- Ergonomic Fit
- Horizontal or Vertical All-in-One Design

01. Pro-Drift V3 Hydraulic Handbrake (Non-Lockable) 320-380mm

320-380mm Adjustable Billet Lever. Horizontal or Vertical.
Part No: **OBPHBV302**

02. Pro-Drift V3 Hydraulic Handbrake (Lockable) 320-380mm

320-380mm Adjustable Billet Lever. Horizontal or Vertical.
Part No: **OBPHBV302L**



PRO-DRIFT V2

// HYDRAULIC HANDBRAKE

// PRO-DRIFT V2 HYDRAULIC HANDBRAKES

The Pro-Drift V2 – The Original Hydraulic Handbrake. Designed for the professional and semi-professional teams and drivers. Universally mounted for any Motorsport application.

The mix of Mild Steel Cradle and Aircraft Grade T6061 Aluminium Pedals, allows for excellent rigidity, enhanced feel and bullet proof construction.

- Aircraft Grade T6061 Aluminium Handle
- Mild Steel Cradle Construction
- Ergonomic Fit
- Horizontal or Vertical All-in-One Design



01. Pro-Drift V2 Hydraulic Handbrake (Non-Lockable)

320-380 mm Adjustable Billet Lever.
Horizontal or Vertical.
No Master Cylinder included.
Part No: OBPHBV20A1

02. Pro-Drift V2 Hydraulic Handbrake (Non-Lockable)

540-600 mm Adjustable Billet Lever.
Horizontal or Vertical.
Part No: OBPHBV2L0A1

03. Pro-Drift V2 Hydraulic Handbrake (Lockable)

320-380 mm Adjustable Billet Lever.
Horizontal or Vertical.
No Master Cylinder included.
Part No: OBPHBV20A1L

04. Pro-Drift V2 Hydraulic Handbrake (Lockable)

540-600 mm Adjustable Billet Lever.
Horizontal or Vertical.
No Master Cylinder included.
Part No: OBPHBV2L0A1L

VICTORY

// HYDRAULIC HANDBRAKE

// VICTORY HYDRAULIC HANDBRAKES

The Victory Range of products have been designed for the Clubman race teams and drivers. These products have been produced since obp Motorsport since the beginning, and have been improved to work with the current demanding environments in Motorsport.

- Aircraft Grade T6061 Aluminium Handle Models Available
- Mild Steel Construction
- Ergonomic Design
- UK Designed and Manufactured
- Now with Dark Matter Coating

01. Victory Vertical Hydraulic Handbrake (Non-Lockable)

280mm Lever Length.
Part No: OBPHB0A3

02. Victory Vertical Hydraulic Handbrake (Non-Lockable)

600mm Lever Length.
Part No: OBPHBLA3

03. Victory Vertical Hydraulic Handbrake (Lockable)

280mm Lever Length.
Part No: OBPHB0A3L

04. Victory Vertical Hydraulic Handbrake (Lockable) 600mm

600mm Lever Length.
Part No: OBPHBLA3L

05. Victory Horizontal Hydraulic Handbrake (Lockable)

280mm Lever Length.
Part No: OBPHB0A1L



VICTORY

// HYDRAULIC HANDBRAKE

// VICTORY HYDRAULIC HANDBRAKES



FOR ANCILLARY
PRODUCTS, PLEASE
SEE PAGES 24-25

01. Victory 45 Degree Hydraulic Handbrake (Lockable)
280mm Lever Length.
Part No: **OBPHB0A2L**

02. Victory Twin Vertical Hydraulic Handbrake (Lockable) 600mm
600mm Lever Length.
Part No: **OBPHBLA3L2**

03. Victory Vertical Reverse Hydraulic Handbrake (Non-Lockable)
280mm Lever Length.
Part No: **OBPHBR02**

04. Victory Vertical Reverse Hydraulic Handbrake (Non-Lockable)
600mm Lever Length.
Part No: **OBPHBR04**

“

TESTIMONIAL

*My new BMW Z4 is loaded
with obp Motorsport products.*

*I would like to thank the team
for all the support over the
2019 Season.*

*And I am looking forward to
working with you in the
coming years.*

Adam Simmons
UK
★★★★★

**VICTORY**

// HYDRAULIC HANDBRAKE

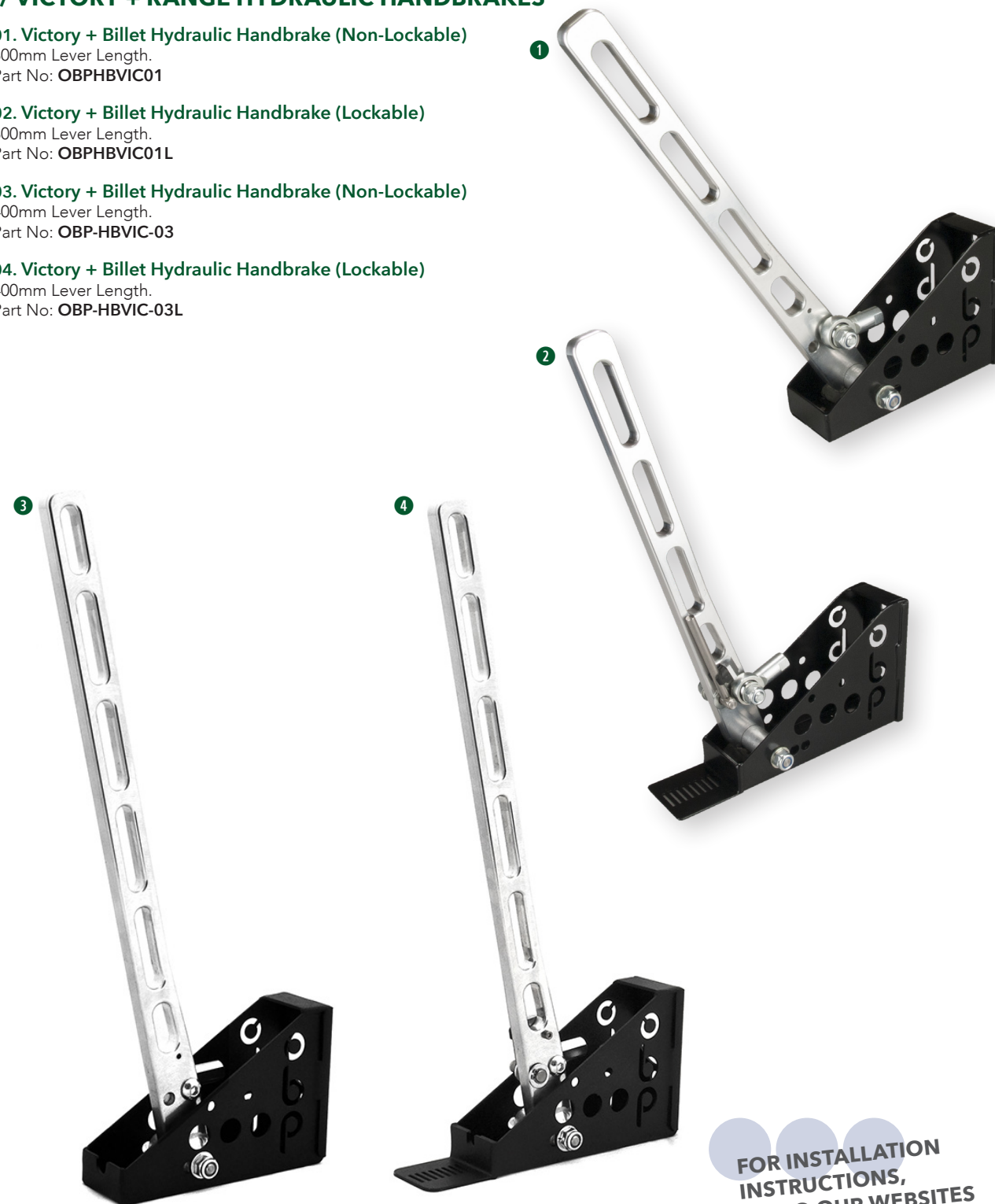
// VICTORY + RANGE HYDRAULIC HANDBRAKES

01. Victory + Billet Hydraulic Handbrake (Non-Lockable)
300mm Lever Length.
Part No: **OBPHBVIC01**

02. Victory + Billet Hydraulic Handbrake (Lockable)
300mm Lever Length.
Part No: **OBPHBVIC01L**

03. Victory + Billet Hydraulic Handbrake (Non-Lockable)
400mm Lever Length.
Part No: **OBP-HBVIC-03**

04. Victory + Billet Hydraulic Handbrake (Lockable)
400mm Lever Length.
Part No: **OBP-HBVIC-03L**



FOR INSTALLATION
INSTRUCTIONS,
GO TO OUR WEBSITES
“HELP SHEETS” SECTION

// PEDAL BOX & HANDBRAKE ANCILLARIES

Our specially selected range of products that work in unison with all of our obp Motorsport core hardware. Whether you are looking for master cylinders, bias adjusters or replacement parts. obp Motorsport has you covered.

Standard Master Cylinder Sizes: Front Brakes: 0.625 Rear Brakes: 0.7 Clutch: 0.75

For more information on what you need for your installation please call your local dealer or our technical team.



// UNIVERSAL STAINLESS STEEL BRAIDED RESERVOIR FEED PIPE

01. 310mm Length, 7/16 UNF female each end, 7/16 UNF male fitting
Part No: OBPST001

02. 620mm Length, 7/16 UNF female each end, 7/16 UNF male fitting
Part No: OBPST002

03. 930mm Length, 7/16 UNF female each end, 7/16 UNF male fitting
Part No: OBPST003

Kit Content: 1 x Banjo with 7/16 UNF Fitting, 2 x Washers, 1 x 7/16th UNF Banjo Bolt
Part No: OBPBAN01

Kit Content: 1 x Stainless Steel Braided Reservoir Feed Pipe 1620mm long, 1 x 7/16th UNF banjo fitting, 2 x washers, 1 x 7/16 Banjo Bolt (OBPBAN01)
Part No: OBPSUB001

Kit Content: 1 x Stainless Steel Braided Reservoir Feed Pipe 530mm long, 1 x 7/16th UNF banjo fitting, 2 x washers, 1 x 7/16 Banjo Bolt (OBPBAN01)
Part No: OBPMINI001

// OBP MASTER CYLINDERS

Single Master Cylinder Bolt Kit.
Part No: OBPBOLT1

Three Master Cylinder Bolt Kits.
Part No: OBPBOLT3

04. Master Cylinder
.7. Part No: OBPCB001
.625. Part No: OBPCB002
.75. Part No: OBPCB003
.875. Part No: OBPMC15
1" Bore. Part No: OBPMC17

05. Integral Master Cylinder
.625. Part No: OBPMC01
.7. Part No: OBPMC02
.75. Part No: OBPMC03
.875. Part No: OBPMC005
1". Part No: OBPMC007

Master Cylinder Piston & Seal Repair Kit -
.625. Part No: OBPRP625
.700. Part No: OBPRP7
.750. Part No: OBPRP75

06. Standard length Push Rod
84mm Long x 5/16 Thread
Part No: OBPMCPR01

// ALCON MASTER CYLINDERS

07. Alcon Advantage Range Master Cylinder
0.625 Part No: OBPMS/625
0.700 Part No: OBPMS/700
0.750 Part No: OBPMS/750

// RESERVOIRS

08. Single Reservoirs (Standard)
Size: 80mm in height and 70mm across.
7/16-20 UNF fitting
Part No: OBPCB004

Single Reservoir Cap Only.
60mm Diameter
Part No: OBPCB004-T

09. Single Reservoirs (Taller)
Size: 115mm (H) x 60mm (Dia).
7/16-20 UNF fitting
Part No: OBPCB004B

10. Reservoir Float Level Indicator Switch
Part No: OBPCB013

// RESERVOIR BRACKETS

01. Reservoir Bracket Single. Part No: OBPCB008

02. Reservoirs Bracket Double. Part No: OBPCB007

03. Reservoirs Bracket Triple. Part No: OBPCB006

// CLEVIS'

04. 5/16 UNF Clevis
8.84mm "U" gap. Part No: OBPCB005
8.35mm "U" gap. Part No: OBPCB005S

M6 Clevis
5.4mm "U" gap. Part No: OBPG5
6.5mm "U" gap. Part No: OBPG6

5/16 UNF Thread Clevis. Part No: OBPCB005L

// BIAS ADJUSTERS

05. Balance / Bias Adjuster Cable
700 mm. Part No: OBPCB009
1700 mm. Part No: OBPCB009L

Pro-Race V3 Billet Alloy Bias Adjuster. Part No: OBP-BA-01

06. Replacement Bias Bar
Bias Bar with Tube
Part No: OBPCB010

// LINE LOCK

07. Line Lock. Part No: OBPCB011

Line Lock Bracket. Part No: OBPLL01

08. Potentiometers
Dual Signal Linear Potentiometer
Part No: OBPPOT2

// BIAS VALVES

09. Bias Valve. Part No: OBPCB012

10. Brake Bias Proportioning Valve (Screw)
Part No: OBPBV01

11. Brake Bias Proportioning Valve (Lever)
Part No: OBPBV02

12. Pedal Box Fixing Kit
6 x Steel Pedal Box Fixing Top Hats and Bolts
Part No: OBPCB016

// ADAPTERS AND CONVERTERS

7/16 Male Concave to Male Concave Hose Adaptor
Part No: OBPFHF

13. Track Pro Hydraulic to Cable Clutch Converter Mechanism
Part No: OBPPCCA

14. Pro Race Hydraulic to Cable Clutch Converter Mechanism
Part No: OBPPCCA

15. Bias Bar Adaptor, Male 7/16" UNF to 3/8" UNF Female
Part No: OBPCB015

16. Aluminium Accelerator Twin Cable Block
Part No: OBP0048PR

// PEDAL BOX FIXING KIT

6 x Steel Pedal Box Fixing Top Hats and Bolts. Part No: OBPFHF

// INLINE BRAKE PRESSURE SWITCHES

1/8 NPT Brake Light Inline Pressure Switch.
Part No: OBP-BPS-01

3/8 UNF Male 1/8 NPT Female Tee Adapter
Part No: OBP-BPS-02



// DARK MATTER RANGE

Aluminium Products have always been a core part of obp Motorsport's product line up. Over recent years we have been inundated with requests from customers for something different than our bare aluminium finish. In response we have created our signature Dark Matter Black Finish.



// DARK MATTER FOOTRESTS

01. Small Dark Matter Navigator Foot Rest
Part No: OBPA040DM

02. Large Dark Matter Navigators Foot Rest
Part No: OBPA041DM

03. Alloy Driver Dark Matter Clutch Foot Rest
Part No: OBPA042DM

04. Alloy Drivers Dark Matter Flat Foot Rest
Part No: OBPA043DM

05. Aluminium Dark Matter Foot Rest
Part No: OBP0400DM

06. Alloy Dark Matter Master Cylinder Cover Plate
Part No: OBP0339DM

// ODYSSEY DARK MATTER BATTERY BRACKETS

07. PC545 Racing 20 Battery Bracket
Part No: OBP0079DM

PC680 Racing 25 Battery Bracket
Part No: OBP0A80DM

// DARK MATTER OIL CATCH TANKS

Dark Matter Bulkhead Mount Oil Catch Tank

1 Ltr. Part No: OBPCT001DM

08. 2 Ltr. Part No: OBPCT002DM

09. 0.5 Ltr. Part No: OBPCT003DM

1 Ltr with JIC Fittings. Part No: OBPCTJIC01DM



// DARK MATTER DRY SUMP TANK

01. 1 Gallon. Part No: OBPDS01DM

// DARK MATTER FUEL SWIRL POTS

02. 1 Ltr Base Mount. Part No: OBPA020DM

03. 2 Ltr Base Mount. Part No: OBPA021DM

04. 1 Ltr Bulkhead Mount with JIC Fittings. Part No: OBPA023JDM

05. 1 Ltr Bulkhead Mount. Part No: OBPA024DM

1 Ltr Base Mount 'Dark Matter' Fuel Swirl Pot. Part No: OBPA025DM

// DARK MATTER ROUND HEADER TANKS

06. Horizontal. Part No: OBPHE001DM

07. Vertical. Part No: OBPHE002DM

// DARK MATTER POWER STEERING RESERVOIRS

Universal Fit 1 Litre Aluminium Power Steering Tank.

2 x JIC 8 Female Fittings

Part No: OBP-PS01DM

Universal Fit 1 Litre Aluminium Power Steering Tank with Breather.

2 x JIC 8 Female Fittings

Part No: OBP-PS02DM

// TOP MOUNTS

One of the latest additions to the obp Motorsport product line up is our range of Competition and Professional Alloy Top Mounts. Manufactured from Aircraft Grade T6061 Aluminium. You are put back in the driving seat being able to choose from our Carbon Steel – PTFE Lined Spherical Bearing or The FLURO Stainless Steel Heavy Duty Motorsport Grade – PTFE Lines Spherical Bearing.

Specifically designed for easy adjustment, so you can adjust exactly to your required specification.

// PTFE LINED SPHERICAL BEARING - CARBON STEEL

01. Ford Capri / Escort MK1 & MK2 Front - 1 Piece
(Camber Adjustable)
Part No: OBPTM001F

02. Ford Capri / Escort MK1 & MK2 Front - 2 Piece
(Camber Adjustable)
Part No: OBPTM002F

03. BMW E36 Front - 2 Piece (Camber Adjustable)
Part No: OBPTM36F

04. Peugeot 205 Front - 1 Piece (Camber Adjustable)
Part No: OBPTM205F

05. Renault Clio 182 Front - 2 Piece Threaded (Camber Fixed)
Part No: OBPTM182F
(All priced per pair)

// FLURO SPHERICAL BEARING - STAINLESS STEEL - MOTORSPORT GRADE HEAVY-DUTY

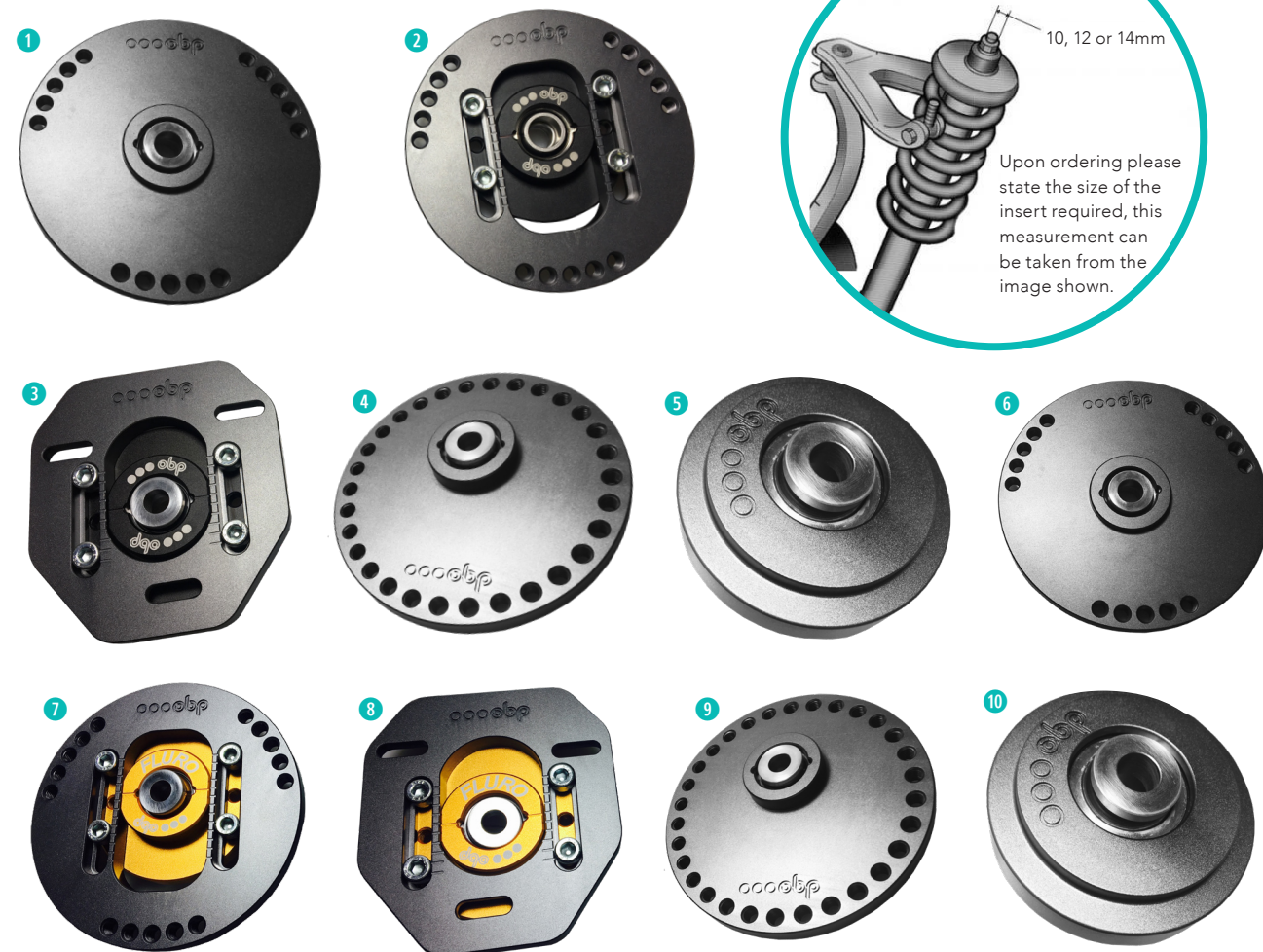
06. Ford Capri / Escort MK1 & MK2 Front - 1 Piece
(Camber Adjustable)
Part No: FLUOTM001F

07. Ford Capri / Escort MK1 & MK2 Front - 2 Piece
(Camber Adjustable)
Part No: FLUOTM002F

08. BMW E36 Front - 2 Piece (Camber Adjustable)
Part No: FLUOTM36F

09. Peugeot 205 Front - 1 Piece (Camber Adjustable)
Part No: FLUOTM205F

10. Renault Clio 182 Front - 2 Piece Threaded (Camber Fixed)
Part No: FLUOTM182F
(All priced per pair)



// FUEL SWIRLS POTS

Designed to meet the requirements of the serious enthusiasts who are using a fuel injected car for competition or track day use. The obp fuel swirl pot will ensure a constant supply of fuel, minimising the risk of an injection pump failure through fuel starvation (whilst cornering hard) or air contamination in the fuel.

// UNIVERSAL ALUMINIUM SWIRL POTS WITH PUSH FITTINGS

No.	Capacity (l)	Mounting	Dia (mm)	H (mm)	Note	Part Number
01.	1	Base	100	135		OBPA020
	2	Base	100	280		OBPA021
02.	2	Bulkhead	100	280	Outlet from Base	OBPA022
	1	Bulkhead	100	135	Outlet from Base	OBPA023
	2	Bulkhead	100	280	Bent Top Tube	OBPA024
	1	Bulkhead	100	135	Bent Top Tube	OBPA025
03.	1.5	Base	100	220		OBPA026
	1.5	Bulkhead	100	220	Outlet from Base	OBPA027
	1.5	Bulkhead	100	220	Bent Top Tube	OBPA028
	2	Base	130	170	Bent Top Tube	OBPA029
	2	Bulkhead	130	170	Bent Top Tube	OBPA030

// UNIVERSAL ALUMINIUM SWIRL POTS WITH JIC FITTINGS

No.	Capacity (l)	Mounting	Dia (mm)	H (mm)	Fittings	Outlet	Part Number
04.	1	Base	100	135	3 x JIC -6	JIC -8	OBPJICS23
	1.5	Base	100	220	3 x JIC -6	JIC -8	OBPJICS24
	2	Base	100	280	3 x JIC -6	JIC -8	OBPJICS25
	1	Bulkhead	100	135	3 x JIC -6	JIC -8	OBPPA023J
	1.5	Bulkhead	100	220	3 x JIC -6	JIC -8	OBPPA027J
	2	Bulkhead	130	170	3 x JIC -6	JIC -8	OBPPA030J

// WATER SWIRLS POTS

It is standard race car practice to use a swirl pot in the cooling system. If hot spots in the engine cause localised boiling of the water, small pockets of air will form. Air in the water will reduce heat transfer in the cooling system. The swirl pot will spin the water around inside it, allowing the air to rise and be released.



// WATER SWIRL POTS

05. Water Swirl Pot

Approx Size: Main Body Length 195mm, 65mm O/D 2 x Swaged 32mm O/D Fitting 1 x Ribbed 8mm Bleed Pipe
Part No: OBPWSP001

06. Aluminium water swirl pot with parallel in and out.

Body Length 195mm, 65mm O/D 2 x Swaged 32mm O/D Fitting 1 x Ribbed 8mm Bleed Pipe
Part No: OBPWSP002

07. Aluminium water swirl pot.

Body Length 195mm, 65mm O/D 2 x Swaged 32mm O/D Fitting + 1 x Standard Radiator Neck with 10mm Overflow
Part No: OBPWSP003



// ALUMINIUM PRODUCTS

All obp Motorsport's Aluminium Products are precision made for competition or road car use. Our tanks are individually manufactured by hand in the UK, they then go through a rigorous Quality Control Process to ensure the finished product can withstand the harshest of Motorsport environments. The craftsmanship on these products is second to none and not to be compared to cheaper equivalents.

// ALUMINIUM BAFFLED FUEL TANKS WITH PUSH FITTINGS

// ALUMINIUM BAFFLED FUEL TANKS

Square Aluminium 10mm Outlet, Inlet, Breather, 50mm Billet Screw Cap Filler

01. 2 Gallon (H)200mm x (W)180mm x (L)300mm. Part No: **OBPFT001H**

3 Gallon (H)200mm x (W)200mm x (L)340mm. Part No: **OBPFT002**

6 Gallon (H)150mm x (W)300mm x (L)600mm. Part No: **OBPFT005**

8 Gallon (H)250mm x (W)300mm x (L)480mm. Part No: **OBPFT006**

// ALUMINIUM BAFFLED FUEL TANKS WITH SENDER HOLE

Square Aluminium 10mm Outlet, Inlet, Breather, 50mm Billet Screw Cap Filler

02. 4 Gallon (H)150mm x (W)250mm x (L)490mm. Part No: **OBPFTS01**

6 Gallon (H)150mm x (W)300mm x (L)600mm. Part No: **OBPFTS02**

8 Gallon (H)250mm x (W)300mm x (L)480mm. Part No: **OBPFTS03**

// ALUMINIUM BAFFLED FUEL TANKS WITH SPLASH BOWL

Square Aluminium 10mm Outlet, Inlet, Breather, 50mm Splash Bowl

03. 3 Gallon (H)200mm x (W)200mm x (L)340mm. Part No: **OBPFTSB002**

4 Gallon (H)150mm x (W)250mm x (L)490mm. Part No: **OBPFTSB003**

6 Gallon (H)150mm x (W)300mm x (L)600mm. Part No: **OBPFTSB005**

8 Gallon (H)250mm x (W)300mm x (L)480mm. Part No: **OBPFTSB006**

// ALUMINIUM BAFFLED FUEL TANKS WITH SENDER HOLE & SPLASH BOWL

Square Aluminium 10mm Outlet, Inlet, Breather, 50mm Splash Bowl

04. 4 Gallon (H)150mm x (W)250mm x (L)490mm. Part No: **OBPFTSSB01**

6 Gallon (H)150mm x (W)300mm x (L)600mm. Part No: **OBPFTSSB02**

8 Gallon (H)250mm x (W)300mm x (L)480mm. Part No: **OBPFTSSB03**

*** PLEASE NOTE THAT ALL 8 GALLON TANKS ARE MADE TO ORDER ***



All Aluminium Tanks
obp Manufacture are



Aurimas "Odi" Bakchis – Formula Drift

// ALUMINIUM BAFFLED FUEL TANKS WITH JIC FITTINGS

// ALUMINIUM BAFFLED FUEL TANKS WITH JIC FITTINGS

Square Aluminium JIC 10 Outlet, Inlet, Breather, 50mm Billet Screw Cap Filler

2 Gallon (H)300mm x (W)180mm x (L)200mm. Part No: **OBPFTJIC001**

01. 3 Gallon (H)200mm x (W)200mm x (L)340mm. Part No: **OBPFTJIC002**

6 Gallon (H)150mm x (W)300mm x (L)600mm. Part No: **OBPFTJIC005**

8 Gallon (H)250mm x (W)300mm x (L)480mm. Part No: **OBPFTJIC006**

// ALUMINIUM BAFFLED FUEL TANKS WITH JIC FITTINGS & SENDER HOLE

Square Aluminium JIC 10 Outlet, Inlet, Breather, 50mm Billet Screw Cap Filler

02. 4 Gallon (H)150mm x (W)250mm x (L)490mm. Part No: **OBPFTSJIC01**

6 Gallon (H)150mm x (W)300mm x (L)600mm. Part No: **OBPFTSJIC02**

8 Gallon (H)250mm x (W)300mm x (L)480mm. Part No: **OBPFTSJIC03**

// ALUMINIUM BAFFLED FUEL TANKS WITH JIC FITTINGS & SPLASH BOWL

Square Aluminium JIC 10 Outlet, Inlet, Breather, 50mm Splash Bowl

03. 3 Gallon (H)200mm x (W)200mm x (L)340mm Part No: **OBPFTSBJIC002**

6 Gallon (H)150mm x (W)300mm x (L)600mm Part No: **OBPFTSBJIC005**

8 Gallon (H)250mm x (W)300mm x (L)480mm Part No: **OBPFTSBJIC006**

// ALUMINIUM BAFFLED FUEL TANKS WITH JIC FITTINGS, SENDER HOLE & SPLASH BOWL

Square Aluminium JIC 10 Outlet, Inlet, Breather, 50mm Splash Bowl

04. 6 Gallon (H)150mm x (W)300mm x (L)600mm Part No: **OBPFTSSBJIC02**

8 Gallon (H)250mm x (W)300mm x (L)480mm Part No: **OBPFTSSBJIC03**

*** PLEASE NOTE THAT ALL 8 GALLON TANKS ARE MADE TO ORDER ***



All Aluminium Tanks
obp Manufacture are



Luke Woodham – Gymkhana Grid

// FOAM FILLED ALUMINIUM FUEL TANKS WITH PUSH FITTINGS

// FOAM FILLED ALUMINIUM FUEL TANKS

Square Aluminium Foam Filled 10mm Outlet, Inlet, Breather, 50mm Billet Screw Cap Filler

01. 3 Gallon (H)200mm x (W)200mm x (L)340mm. Part No: **OBPFT011**

6 Gallon (H)150mm x (W)300mm x (L)600mm. Part No: **OBPFT014**

8 Gallon (H)250mm x (W)300mm x (L)480mm. Part No: **OBPFT015**

// FOAM FILLED ALUMINIUM FUEL TANKS WITH JIC FITTINGS

Square Aluminium JIC 10 Outlet, Inlet, Breather, 50mm Billet Screw Cap Filler

02. 3 Gallon (H)200mm x (W)200mm x (L)340mm. Part No: **OBPFTJIC011**

6 Gallon (H)150mm x (W)300mm x (L)600mm. Part No: **OBPFTJIC014**

8 Gallon (H)250mm x (W)300mm x (L)480mm. Part No: **OBPFTJIC015**

// FOAM FILLED ALUMINIUM FUEL TANKS WITH PUSH FITTINGS & SPLASH BOWL

Square Aluminium 10mm Outlet, Inlet, Breather, 50mm Splash Bowl

03. 3 Gallon (H)200mm x (W)200mm x (L)340mm. Part No: **OBPFTSB011**

6 Gallon (H)150mm x (W)300mm x (L)600mm. Part No: **OBPFTSB014**

8 Gallon (H)250mm x (W)300mm x (L)480mm. Part No: **OBPFTSB015**

// FOAM FILLED ALUMINIUM FUEL TANKS WITH JIC FITTINGS & SPLASH BOWL

Square Aluminium JIC 10 Outlet, Inlet, Breather, 50mm Splash Bowl

3 Gallon (H)200mm x (W)200mm x (L)340mm. Part No: **OBPFTSBJIC011**

04. 6 Gallon (H)150mm x (W)300mm x (L)600mm. Part No: **OBPFTSBJIC014**

8 Gallon (H)250mm x (W)300mm x (L)480mm. Part No: **OBPFTSBJIC015**

*** PLEASE NOTE THAT ALL 8 GALLON TANKS ARE MADE TO ORDER ***



All Aluminium Tanks
obp Manufacture are



Steve "Baggy" Biagioni – Goodwood Festival of Speed

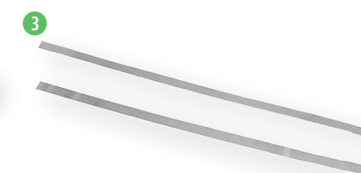
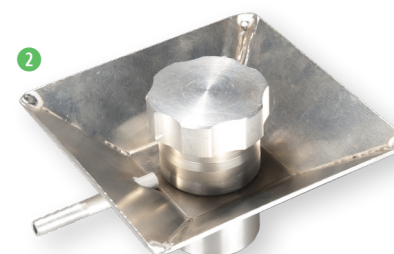
// KIT CAR ALUMINIUM FUEL TANKS

// KIT CAR ALUMINIUM FUEL TANKS

Alloy Kit Car Fuel Tank 10mm Outlet, Inlet, Breather, 50mm Fuel Filler

01. 4.5 Gallon (H)205mm x (W-TOP)170mm/(W-BOTTOM)180mm x (L)570mm. Part No: **OBP0023**

6.5 Gallon (H)205mm x (W-TOP)170mm/(W-BOTTOM)180mm x (L)685mm. Part No: **OBP0022**

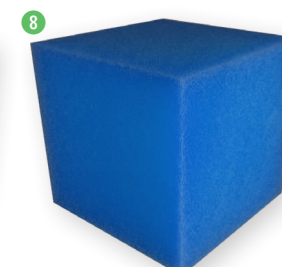
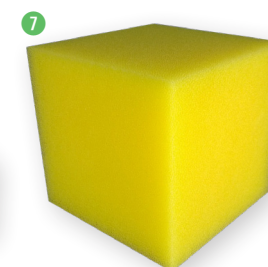
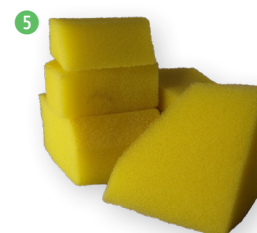


02. Fuel Tank Splash Bowl
with Filler, Screw Cap
40mm. Part No: **OBPSB01**
50mm. Part No: **OBPSB02**

03. Fuel Tank Straps
Universal tank straps to fit obp fuel tanks
Part No: **OBP-STR-001**

04. Fuel Sender
Universal Fuel Sender
Part No: **OBPCB014**

// FUEL TANK FOAM



// FIA COMPLIANT FUEL TANK FOAM

05. FIA Compliant Yellow (Polyester) Foam (Petrol) Off cuts, Per Litre. Part No: **OBPFOAM1**

06. FIA Compliant Blue (Polyether) Foam (Diesel, Methanol and Water) Off cuts, Per Litre. Part No: **OBPFOAM2**

07. FIA Compliant Yellow (Polyester) Foam (Petrol) 22 x 22 x 21cm (10L) Block. Part No: **OBPFOAM3**

08. FIA Compliant Blue (Polyether) Foam (Diesel, Methanol and Water) 22 x 22 x 21cm (10L) Block. Part No: **OBPFOAM4**

FIA Compliant Yellow (Polyester) Foam (Petrol) 10x10x10cm Block. Part No: **OBPFOAM5**

FIA Compliant Blue (Polyether) Foam (Diesel, Methanol and Water) 10x10x10cm Block. Part No: **OBPFOAM6**



+44 (0)1487 812 301



sales@obpltd.com



obpltd.com



+44 (0)1487 812 301



sales@obpltd.com



obpltd.com

// OIL COOLERS

Our range of universal fitment, stacked plate oil coolers are manufactured from 6061 Aluminium. Each Oil Cooler has been pressure tested and withstands high fluid pressures, reduces oil temperatures and exhibits minimal pressure loss. Finished in our Signature Gun Metal Grey Colourway.



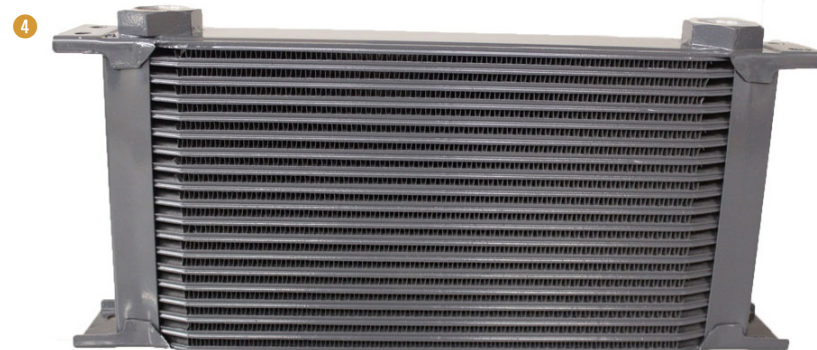
// ALUMINIUM OIL COOLERS

01. 10 Row Oil Cooler 287mm.
Female inlet & Outlet. M22 x 1.5 Thread.
Core L:287mm x H:72mm x W:50mm
L: inc. bracket 328mm.
QC Test Pressure 0.8MPa - 116PSI
Part No: **OBP10ROW**

02. 13 Row Oil Cooler 287mm.
Female inlet & Outlet. M22 x 1.5 Thread.
Core L:287mm x H:95mm x W:50mm
L: inc. bracket 328mm.
QC Test Pressure 0.8MPa - 116PSI
Part No: **OBP13ROW**

03. 16 Row Oil Cooler 287mm.
Female inlet & Outlet. M22 x 1.5 Thread.
Core L:287mm x H:117mm x W:50mm
L: inc. bracket 328mm.
QC Test Pressure 0.8MPa - 116PSI
Part No: **OBP16ROW**

04. 19 Row Oil Cooler 287mm.
Female inlet & Outlet. M22 x 1.5 Thread.
Core L:287mm x H:140mm x W:50mm.
L: inc. bracket 328mm.
QC Test Pressure 0.8MPa - 116PSI
Part No: **OBP19ROW**



// OIL COOLER ADAPTERS

JIC6 x M22 Oil Cooler Adaptor. Part No: **OBP-6-M22**

JIC8 x M22 Oil Cooler Adaptor. Part No: **OBP-8-M22**

JIC10 x M22 Oil Cooler Adaptor. Part No: **OBP-10-M22**

JIC12 x M22 Oil Cooler Adaptor. Part No: **OBP-12-M22**

JIC16 x M22 Oil Cooler Adaptor. Part No: **OBP-16-M22**



// OIL CATCH TANKS

// UNIVERSAL ALUMINIUM OIL CATCH TANKS

Bulk Head Mount, Drain Bung, Sight Tube, 13mm Inlet, Outlet & Breather

01. 1 Litre Square 180mm x 105mm x 65mm,
Part No: **OBPCT001**

2 Litre Square 200mm x 150mm x 70mm
Part No: **OBPCT002**

0.5 Litre Round 90mm x 90mm Dia
Part No: **OBPCT003**

02. 1 Litre Round 170mm x 90mm Dia
Part No: **OBPCT004**

// UNIVERSAL ALUMINIUM OIL CATCH TANKS - BAFFLED

Bulk Head Mount, Drain Bung, Sight Tube, 13mm Inlet, Outlet & Breather

1 Litre Square 180mm x 105mm x 65mm,
Part No: **OBPCT005**

2 Litre Square 200mm x 150mm x 70mm
Part No: **OBPCT006**

03. 0.5 Litre Round 90mm (height) x 90mm Dia
Part No: **OBPCT007**

1 Litre Round 170mm (height) x 90mm Dia
Part No: **OBPCT008**

SUBARU Baffled Bulk Head Mount Oil Catch Tank, Drain Bung, Sight Tube, 1 Litre Round 170mm (height) x 90mm Dia

10mm Inlet, Outlet & Breather
Part No: **OBPCTSU01B**

04. 15mm Inlets & Outlet, 22mm Breather
Part No: **OBPCTSU02B**



// RACE SPEC ALUMINIUM OIL CATCH TANKS

No.	Capacity (l)	10mm Drain Plug	Sight Tube	D (mm)	W (mm)	H (mm)	Inlet/Outlet and Breather Fittings	Part Number
	1.5	✓	✓	80	125	180	10mm	OBPM01
05.	2	✓	✓	80	145	205	1/2"	OBPM02
	3	✓	✓	90	170	230	1/2"	OBPM03
	1.5	✓	✓	80	125	180	6 JIC	OBPM01J
	2	✓	✓	80	145	205	6 JIC	OBPM02J
06.	3	✓	✓	90	170	230	10 JIC	OBPM03J
	1.5	✓	✓	80	125	180	6 JIC Female	OBPM01JF
07.	2	✓	✓	80	145	205	8 JIC Female	OBPM02JF
	3	✓	✓	90	170	230	10 JIC Female	OBPM03JF



WATER HEADER & DRY SUMP TANKS

// WATER HEADER TANKS

The header tank is used to eliminate unwanted air in the vehicles cooling system, achieving greater cooling efficiency. Made from aluminium, they are a strong and lightweight option for your race car. These header tanks will accept standard size radiator caps.

// UNIVERSAL ALUMINIUM WATER HEADER TANKS (NO RADIATOR PRESSURE CAP)

01. Horizontal Round

200 mm x 100mm, 10mm Out, 18mm In, 8mm Pressure Over Flow Pipe
Part No: **OBPHE001**

02. Vertical Round

200 mm x 100mm, 10mm Out, 18mm In, 8mm Pressure Over Flow Pipe
Part No: **OBPHE002**

03. Square

150mm x 150mm x 150mm, Capacity 3 Ltr, 10mm Inlet and 10mm Outlet
Part No: **OBPHE004**

04. Vertical Round

200 mm x 100mm, 10mm Out, 18mm In, 8mm Pressure Over Flow Pipe + SIGHT TUBE
Part No: **OBPHE005**



All Aluminium Tanks
obp Manufacture are



// DRY OIL SUMP TANKS

Our dry sump tank is professionally manufactured out of aluminium incorporating an internal baffle system to prevent oil surge and starvation. JIC 12 on inlet and outlet ports and a screw on filler cap with a 10mm breather outlet on the 40mm Screw Cap filler neck.

// DRY OIL SUMP TANKS

05. 1 Gallon Dry Sump Oil Tank

(D)190mm x (H)210mm. 40mm Screw Cap Filler
Includes: 2 x JIC 12, 1 x 10mm Breather
Part No: **OBPDS01**

06. 1.5 Gallon Dry Sump Oil Tank

(D)190mm x (H)270mm. 40mm Screw Cap Filler
Includes: 2 x JIC 12, 1 x 10mm Breather,
Part No: **OBPDS02**

2 Gallon Dry Sump Oil Tank

(D)190mm x (H)356mm. 40mm Screw Cap Filler
Includes: 2 x JIC 12, 1 x 10mm Breather
Part No: **OBPDS03**

2.5 Gallon Dry Sump Oil Tank

(D)190mm x (H)410mm. 40mm Screw Cap Filler
Includes: 2 x JIC 12, 1 x 10mm Breather
Part No: **OBPDS04**

3 Gallon Dry Sump Oil Tank

(D)190mm x (H)468mm. 40mm Screw Cap Filler
Includes: 2 x JIC 12, 1 x 10mm Breather
Part No: **OBPDS05**



All Aluminium Tanks
obp Manufacture are



SEAT BRACKETS & RADIATOR CAPS

// UNIVERSAL RACE SEAT BRACKETS

// UNIVERSAL RACE SEAT BRACKETS

01. Universal Alloy Racing Seat Brackets.

Length 400mm.
Part No: **OBPSM666**

02. obp Low Model Side Race Seat Brackets.

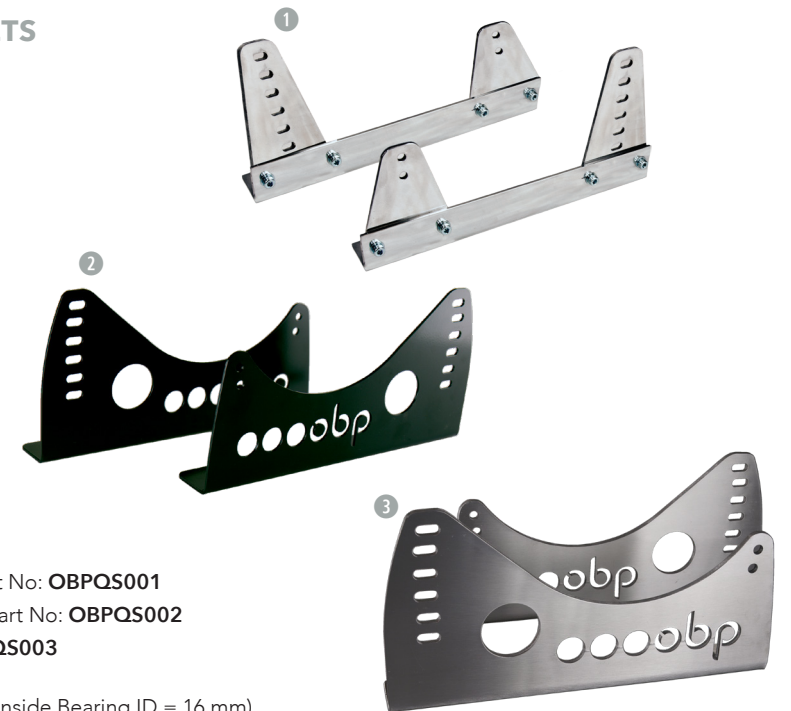
3mm Steel.
Part No: **OBPSM733**

03. obp Low Model Side Race Seat Brackets.

6mm Aluminium
Part No: **OBPSM733A**

obp Low Model Side Race Seat Brackets.

6mm Aluminium. Black Powdercoat
Part No: **OBPSM733AB**



// QUICK SHIFTS

// QUICK SHIFT COMPETITION PRO LEVERS

04. Peugeot 206 / 306 Quick Shift Turret Type. Part No: **OBPQS001**

Peugeot 106 / Saxo / AX Quick Shift Turret Type. Part No: **OBPQS002**

05. Peugeot 106 / Saxo Quick Shift. Part No: **OBPQS003**

QS001 Replacement Bearing.

(Overall OD = 35 mm, Inside bearing OD = 27 mm, Inside Bearing ID = 16 mm)
Part No: **OBPQS-B01**

QS002 Replacement Bearing.

(Overall OD = 42 mm, Inside bearing OD = 34 mm, Inside Bearing ID = 20 mm)
Part No: **OBPQS-B02**

// TRACK END RODS

// TRACK ROD ENDS

06. 5/16 - 24 UNF Thread male, 8mm Diameter Ball.

Total length 53mm
Part No: **OBPNM5**

07. 5/16 - 24 UNF Thread Female, 8mm Diameter Ball

Part No: **OBPNF5**

// RADIATOR CAPS

// CHROME RADIATOR PRESSURE CAPS

08. 13 LBS Chrome Radiator Pressure Cap. Part No: **OBPPC001**

09. 15 LBS Chrome Radiator Pressure Cap. Part No: **OBPPC002**

10. 16 PSI Chrome Radiator Pressure Cap. Part No: **OBPPC003**

11. 20 PSI Chrome Radiator Pressure Cap. Part No: **OBPPC004**



// BATTERY BRACKETS

// 2MM RED ODYSSEY AND TOP BATTERY BRACKETS

01. Red Top 15 Battery Bracket. Part No: OBP0075

Red Top 20 Battery Bracket. Part No: OBP0076

Red Top 30 Battery Bracket. Part No: OBP0077

Red Top 40 Battery Bracket. Part No: OBP0078

Odyssey PC545, Racing 20. Part No: OBP0079

Odyssey PC680, Racing 25. Part No: OBP0A80

Odyssey PC310, Racing 8. Part No: OBP0A81

Odyssey PC535, Racing 18. Part No: OBP0A82

Odyssey PC625, Racing 22. Part No: OBP0A83

02. Odyssey PC925, Racing 35. Part No: OBP0A84

03. Odyssey PC1200. Part No: OBP0A85

Odyssey MX150, Racing 30. Part No: OBP0A86

04. Odyssey MX200, Racing 40. Part No: OBP0A87

// 3MM RED ODYSSEY AND TOP BATTERY BRACKETS

01. Red Top 15 Battery Bracket. Part No: OBP0075/3

Red Top 20 Battery Bracket. Part No: OBP0076/3

Red Top 30 Battery Bracket. Part No: OBP0077/3

Red Top 40 Battery Bracket. Part No: OBP0078/3

Odyssey PC545, Racing 20. Part No: OBP0079/3

Odyssey PC680, Racing 25. Part No: OBP0A80/3

Odyssey PC310, Racing 8. Part No: OBP0A81/3

Odyssey PC535, Racing 18. Part No: OBP0A82/3

Odyssey PC625, Racing 22. Part No: OBP0A83/3

02. Odyssey PC925, Racing 35. Part No: OBP0A84/3

03. Odyssey PC1200. Part No: OBP0A85/3

Odyssey MX150, Racing 30. Part No: OBP0A86/3

04. Odyssey MX200, Racing 40. Part No: OBP0A87/3

// ALUMINIUM BATTERY BOXES

05. Aluminium Battery Tray

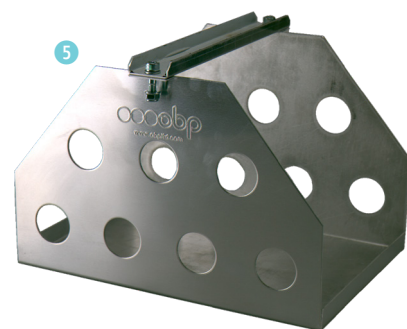
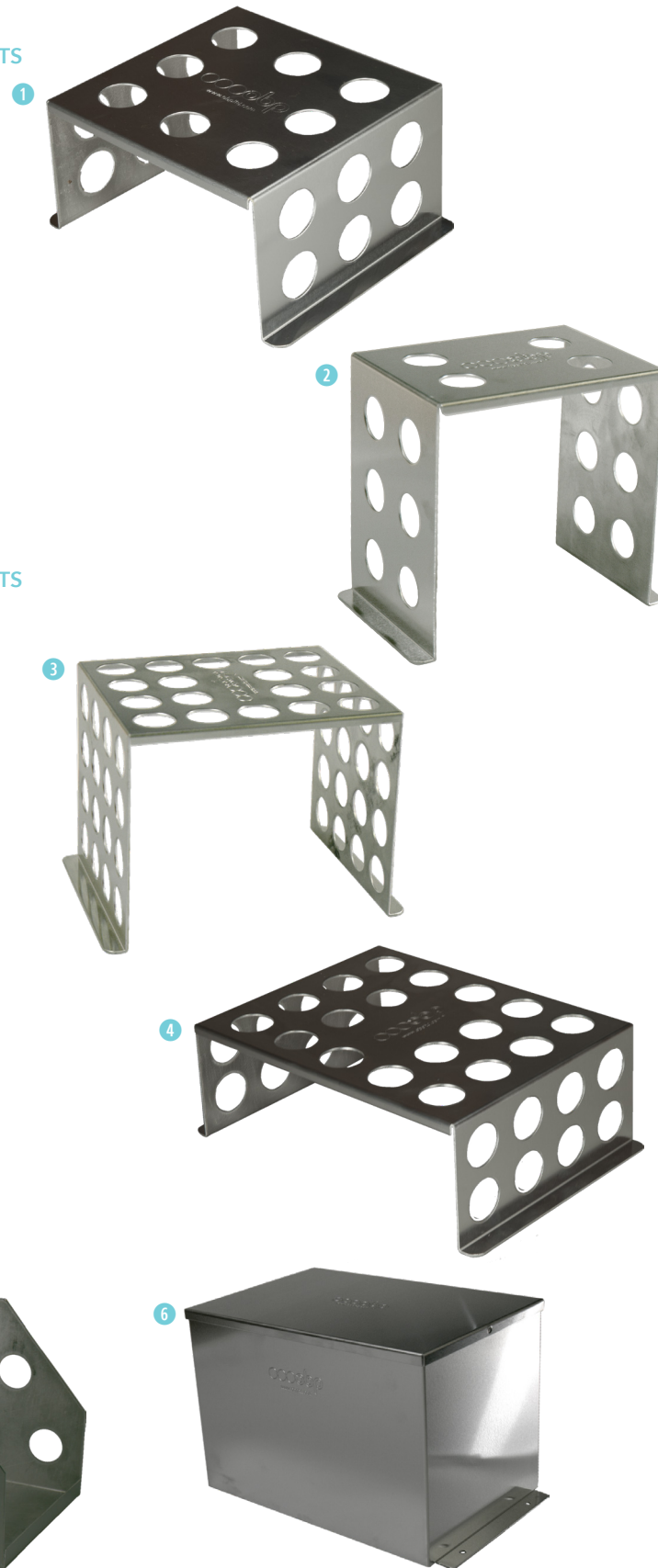
260mm x 175mm long, 175mm high

Part No: OBP0B70

06. Aluminium Battery Box

200mm wide, 305mm long, 205mm high

Part No: OBP0B72



// SELF WELD PARTS

01. RIBBED PUSH FITTINGS

7.9mm OD x 65.7mm Straight. Part No: OBPRIB01

9.8mm OD x 35mm Straight. Part No: OBPRIB02

7.9mm OD x 36mm x 39mm 90 Degree. Part No: OBPRIB03

12.5mm OD x 35mm Straight. Part No: OBPRIB04

12.5mm OD x 81mm x 32mm 90 Degree. Part No: OBPRIB05

9.8mm OD x 65.8mm Straight. Part No: OBPRIB06

9.8mm OD x 60mm x 35mm 90 Degree. Part No: OBPRIB07

19mm OD x 45mm Straight. Part No: OBPRIB08

9.5mm OD x 60mm x 40mm 90 Degree. Part No: OBPRIB09

15.8mm OD x 40mm Straight. Part No: OBPRIB10

15.8mm OD x 50mm Straight. Part No: OBPRIB11

22mm OD 50mm Straight. Part No: OBPRIB12

02. JIC/AN MALE FITTINGS

-3 (3/8" x 24 UNF). Part No: OBPJ03

-4 (7/16" x 20 UNF). Part No: OBPJ04

-6 (9/16" x 18 UNF). Part No: OBPJ06

-8 (3/4" x 16 UNF). Part No: OBPJ08

-10 (7/8" x 14 UNF). Part No: OBPJ10

-12 (1 1/16" x 12 UNF). Part No: OBPJ12

-16 (1 5/16" x 12 UNF). Part No: OBPJ16

03. JIC/AN EXTENDED MALE FITTINGS

-4 (7/16" x 20 UNF). Part No: OBPJE04

-6 (9/16" x 18 UNF). Part No: OBPJE06

-8 (3/4" x 16 UNF). Part No: OBPJE08

-10 (7/8" x 14 UNF). Part No: OBPJE10

-12 (1 1/16" x 12 UNF). Part No: OBPJE12

-16 (1 5/16" x 12 UNF). Part No: OBPJE16

04. FEMALE FITTINGS

1/4" BSP. Part No: OBPBSP01-F

3/8" BSP. Part No: OBPBSP02-F

1/2" BSP. Part No: OBPBSP03-F

5/8" BSP. Part No: OBPBSP04-F

1/4" NPT. Part No: OBPNPT01-F

3/8" NPT. Part No: OBPNPT02-F

1/2" NPT. Part No: OBPNPT03-F

3/4" NPT. Part No: OBPNPT04-F

1" NPT. Part No: OBPNPT05-F

05. JIC/AN FEMALE FITTINGS

-4 (7/16" x 20 UNF). Part No: OBPJIC04-F

-6 (9/16" x 18 UNF). Part No: OBPJIC06-F

-8 (3/4" x 16 UNF). Part No: OBPJIC08-F

-10 (7/8" x 14 UNF). Part No: OBPJIC10-F

-12 (1 1/16" x 12 UNF). Part No: OBPJIC12-F

-16 (1 5/16" x 12 UNF). Part No: OBPJIC16-F

-20 (1 5/8" x 12 UNF). Part No: OBPJIC20-F

06. SELF WELD FUEL FILLER CAPS

40mm O/D 50mm Cap 70mm Height. Part No: OBPCAP01

50mm O/D 60mm Cap 85mm Height. Part No: OBPCAP02

07. ALLOY RADIATOR FILLER NECKS

Self weld 10mm Overflow. Part No: OBPFN001

Billet Alloy - 6mm Ribbed Screw on Overflow. Part No: OBPFN002

Billet Alloy - 8mm Ribbed Screw on Overflow. Part No: OBPFN003

Billet Alloy - 6mm Swaged Screw on Overflow. Part No: OBPFN004

Billet Alloy - 8mm Swaged Screw on Overflow. Part No: OBPFN005



// FOOT RESTS

// NAVIGATOR AND PASSENGER FOOT RESTS

01. Small Navigators Foot Rest
(W)270mm x (D)150mm x (H)180mm
Part No: OBPA040

02. Large Navigators Foot Rest
(W)360mm x (D)410mm x (H)220mm
Part No: OBPA041

03. Alloy Drivers Clutch Foot Rest
(W)75mm x (D)100mm x (H)220mm
Part No: OBPA042

04. Aluminium Flat Drivers Foot Rest
Part No: OBPA043

05. Aluminium Foot Rest
(W) 250mm x (L)200 x (H)100mm x (D)180mm
Part No: OBP0400

06. Alloy M/Cyl Cover & Heel Rest
(D)300mm x (W)270mm
Part No: OBP0339

07. Co-drivers Carbon Footplate
(W)345mm x (H)180mm x (D)470mm
Part No: OBPCF001

08. Drivers Carbon Footplate
(W)405mm x (L)440mm
Part No: OBPCF002

Co-Drivers Black GRP Footrest
(W)345mm x (H)195mm x (D)470 mm
Part No: OBPCF001GRP

09. Drivers Black GRP Footplate
(W)405 mm x (L)440 mm
Part No: OBPCF002GRP



// ROOF VENTS



// BLACK GRP AIR INTAKE ROOF VENT

10. Two Piece. Drain Pipe. Two Adjustable Air Vents.
Internal Mesh Stone Gauze
Part No: OBPGRPV01

11. One Piece. Two Adjustable Air Vents
Part No: OBPGRPV02

// CARBON AIR INTAKE ROOF VENT

12. Two Piece. Drain Pipe. Two Adjustable Air Vents
Part No: OBPCV01

One Piece. Two Adjustable Air Vents
Part No: OBPCV02



// PIT EQUIPMENT

Kit your Pit Garage with obp Motorsport. Our range of handcrafted Pit Equipment makes sure you are covered no matter how tense or heated the garage gets. From Pit Boards to Pit Trollies, obp Motorsport has applied the same British Design and Manufacture from its World-Renowned Pedal Systems.

// PIT BOARDS AND NUMBERS

01. Standard Pit Board Numbers - Yellow
Part No: OBPPBNY

02. Standard Pit Board Numbers - Orange
Part No: OBPPBNO

// UNIVERSAL RALLY & RACE WORK SILL STANDS PAIR

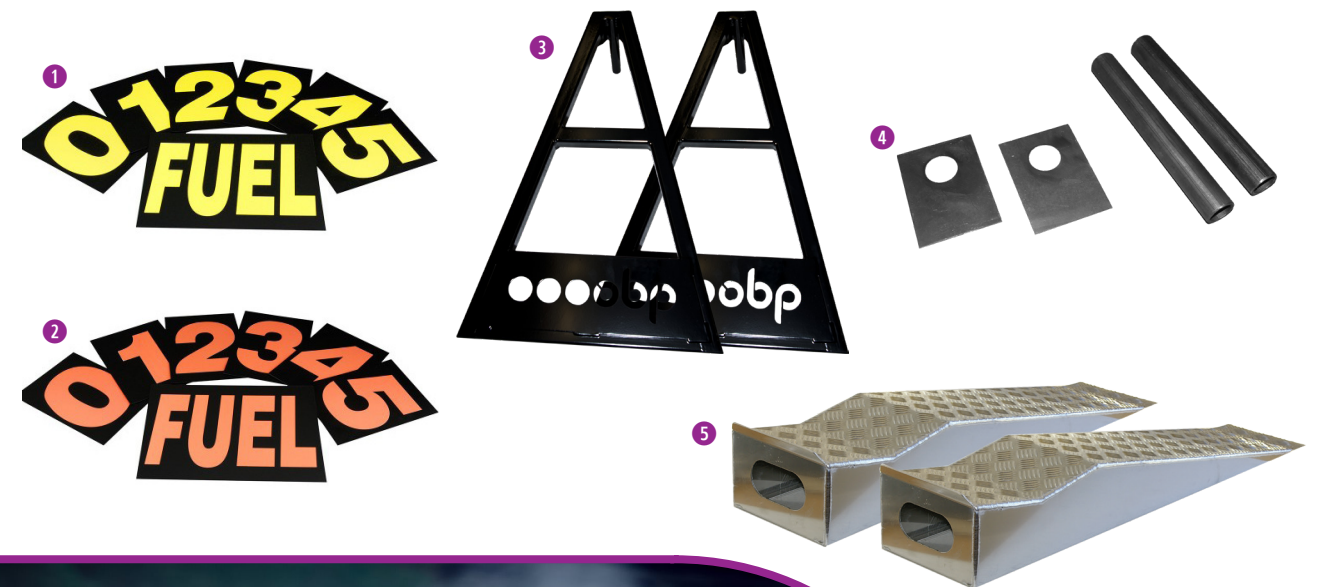
03. Rally 7 Race Work Sill Stands Pair
Sill stands will enable you to work under your car fast and easy.
Part No: OBPWSS01

04. Sill Strengthening Kit
Consists of 2 Plates and 2 Tubes
Part No: OBPWSS02

// UNIVERSAL ALUMINIUM RALLY RAMPS

WRC Spec alloy wheel ramps with a strong chequered alloy top surface. These units have carry holes in the back and stack into each other for very easy storage. They are specifically designed for low riding vehicles, race cars and cars with deep spoilers. At approximately 1.1 metres long the ramps are longer than most ramps on the market. This extra length allows a shallow angle of approach and means that deep spoilers won't foul on the ramps. There will now be sufficient clearance under the spoiler to insert a trolley jack and raise the car higher if required.

05. A Pair of Alloy Rally Ramps
1030mm (L), 225mm (W), 140mm (H), 120mm In Dip
Part No: OBP0500



Jack Shanahan – 2019 Drift Games Extreme Champion

// UNITED KINGDOM

Advantage Motorsport (Oulton Park)
Oulton Park Race Circuit, Tarporley CW6 9BW
www.advantage-motorsport.co.uk
+44 1829 238268

Advantage Motorsport (Donnington)
Donington Park Circuit, Derby DE74 2RP
www.advantage-motorsport.co.uk
+44 1829 238268

Burton Power
617 Eastern Ave, Ilford IG2 6PN
www.burtonpower.com
+44 20 8554 2281

Demon Tweeks
75 Ash Rd S, Wrexham LL13 9UG
www.demon-tweeks.com
+44 1978 664466

Driftworks
Unit 7, Tyseley Industrial Estate, Seeleys Rd,
Birmingham B11 2LQ
www.driftworks.com
+44 121 792 2000

Merlin Motorsport
The Bridgestone Building, Castle Combe Race
Circuit, Chippenham SN14 7EY
www.merlinmotorsport.co.uk
+44 1249 782101

Motorsport Tools
Llithfaen, Pwllheli LL53 6NH
www.motorsport-tools.com
+44 1758 357000

Raceparts (UK)
Unit 3/Rockfort Ind Est/Hithercroft Rd,
Wallingford OX10 9DA
race.parts
+44 1491 822000

Rallynuts
6 Palmers Rd, Redditch B98 0RF
www.rallynuts.com
+44 1527 519400

// USA

Pegasus Auto Racing Supplies
2475 S 179 St, New Berlin, WI 53146
www.pegasusautoracing.com
+1 262-317-1234

// AUSTRALIA

Go Gear Racing Services
Unit 6/267 Scarborough Beach Road,
Mt Hawthorne, 6016 WA
www.gogear.com.au
1300 GOGEAR

// AUSTRIA

Jansen Competition
Ziegelofengasse 2, 3244 Ruprechtshofen,
Austria
www.jansen-competition.com
+43 2756 22660

// BELGIUM

Alltec Seys BVBA
Brugseweg 117/A, 8920 Langemark-Poelkapelle,
Belgium
www.alltec-seys.be
+32 57 36 30 31

// CZECH REPUBLIC

MK Racing
Radošovická 3231/6, 100 00 Praha 10 – Strašnice,
Czech Republic
www.mk-racing.cz
+42 0 778 005 253

// DENMARK

Bruno Hansen Motorsport
Vesterskovvej 1, 5792 Årslev, Denmark
www.motorsportshop.dk
+45 65 99 16 16

// ESTONIA

Racing Expert
Õllekõogi põik 2, Kurna, 75307 Harju maakond,
Estonia
www.racingexpert.eu
+372 520 6330

// FINLAND

Bjork Motorsport
Tiilipojanlenkki 6, 01720, Vantaa, Finland
www.bjorkmotorsport.fi
+358 40 561 6138

Rally Race Finland Oy
Jäspilänkatu 5, 04250 Kerava, Finland
www.rallyracefin.fi
+358 9 2373282

// FRANCE

GT2i
Quartier d'Entreprise Tournezy,
34 Rue Jugurtha, 34074 Montpellier, France
www.gt2i.com
+33 4 67 13 88 10

// GERMANY

CRZ Race Parts
Auf den Höfften 7, 49434 Neuenkirchen-Vörden,
Germany
www.crz-raceparts.de
+49 160 972 701 88

Schluter Motorsport
Hanfeldstraße 40, 49733 Haren (Ems), Germany
www.rennsportshop.com
+49 5932 903540

Timms Autoteile
Hochstraße 29, 47228 Duisburg, Germany
www.timms24.de
+49 2065 63858

// HUNGARY

BP Racing Kft
Mogyoród, Bocskai út 117, 2146 Hungary
www.bpracing.hu
+36 28 785 350

// JORDAN

925 Motorsports
Industrial Area, Wadi Al Sir, Zaher Bin Al Aswad
St. Amman, Jordan
+96 2788 878 886

// IRELAND

Murray Motorsport
Unit 21, Beechlawn Industrial Complex,
Greenhills, Dublin 12, Co. Dublin, Ireland
www.murraymotorsport.com
+353 1 450 0555

// NETHERLANDS

Biesheuvel Autosport V.O.F.
Rijksweg 37, 4255 GE Nieuwendijk, Netherlands
www.biesheuvel.nl
+31 183 403 400

// NEW ZEALAND

Palmside NZ
287 Hoon Hay Rd, Hoon Hay, Christchurch 8025,
New Zealand
www.palmside.co.nz
+64 3-338 9151

Racetech Racing Supplies
18 Barnes Street, Seaview, Seaview,
Lower Hutt 5010, New Zealand
www.racetech.co.nz
+64 4-939 0552

// NORWAY

Stian Sørli Motorsport
Helivein 2, 1820 Spydeberg, Norway
www.stianmotorsport.no
+47 69 83 84 06

// POLAND

Cronic (Rallyshop)
Włocławska 91, 87-100 Toruń, Poland
www.rallyshop.pl
+48 56 652 12 12

Inter-Rally PL

Aleja Wojska Polskiego 48, 82-200 Malbork,
Poland
www.inter-rally.pl
+48 733 816 465

// PORTUGAL

Atomic Shop
Rua Fonte da Carreira 282 Adroana,
Manique 2645-467 Alcabideche, Portugal
www.atomic-shop.pt
+351 963 614 968

// SLOVAKIA

Races S.R.O
Povrazová 99/15, 040 16 Myšlava, Slovakia
www.race-shop.sk
+421 915 441 122

// SPAIN

GT2i Rally
Santa Coloma de Farners (17430), Carretera Sils,
Polígono Can Simon, Parcel.la 2, Nau 3. Spain
www.gt2i.es
+34 972 40 56 78

// SWEDEN

Speeding
Viaredsvägen 35, 504 94 Borås, Sweden
www.speeding-bilverkstads.se
+46 33 28 19 00

// REST OF WORLD (ROW)

Interspares Motorsport
Unit 4/Rockfort Ind Est/Hithercroft Rd,
Wallingford OX10 9DA
www.interspares.com
+44 1491 827460

For more details please visit our website

www.obpltd.com

// DISCLAIMER OF WARRANTY

Purchasers understand and recognise that racing parts and equipment, such as pedal boxes, master cylinders, hydraulic handbrakes, swirl pots, catch tanks etc. and all parts, inventory and services manufactured and/or sold by Optimum Balance Products Ltd are exposed to many and varied conditions due to the manner in which they are installed and used. Purchasers and Optimum Balance Products Ltd consciously desire to make their own bargain, irrespective of any court decision and purchasers agree upon good faith and in consideration for being allowed to purchase from Optimum Balance Products Ltd does not make any affirmation of fact or promise to purchase which relates to said parts, inventory or services, that becomes part of the basis of the bargain between Optimum Balance Products Ltd and purchasers. Nor does Optimum Balance Products Ltd make, or cause to be made to purchaser any description of the goods sold to purchaser nor does Optimum Balance Products Ltd make, or cause to be made, as part of the basis of the bargain with purchasers any description of affirmation of fact concerning any sample or model of racing parts, and equipment inventory or service.

As further consideration for purchasers using Optimum Balance Products Ltd racing parts and equipment any and all inventory and services, purchasers acknowledge that due to the differing conditions and circumstances under which all equipment and parts are installed and used, purchasers are not relying on Optimum Balance Products Ltd skill or judgement to select or furnish the proper part or equipment. Purchasers expressly affirm they are relying upon their own skill or judgement to select and purchase suitable goods.

Optimum Balance Products Ltd makes no warranties whatsoever, expressed or implied, oral or written, to purchasers. There is no warranty of merchantability made to purchasers. Optimum Balance Products Ltd further excludes any implied warranty of fitness with respect to racing and equipment, any and all inventory, and service.

It is expressly understood and agreed between purchasers and Optimum Balance Products Ltd that as part of the bargain between Optimum Balance Products Ltd and purchasers, and in consideration of doing business with each other, all purchasers take, select and purchase said racing parts, equipment, any and all inventory, or services from Optimum Balance Products Ltd “as is” and “with all faults” and Optimum Balance Products Ltd shall always provide purchasers with a full and complete opportunity to examine, at purchasers’ leisure and convenience, any racing parts, and equipment, any and all inventory, or services when purchasing or contemplating purchasing from Optimum Balance Products Ltd.

If, and in the event that purchasers expressly or impliedly cause representations, or statements or affirmations of fact contrary to this disclaimer of all warranties, expressed or implied, then purchasers agree to indemnify and hold harmless Optimum Balance Products Ltd in the event of any claim, demand or legal action against Optimum Balance Products Ltd by any purchaser.

Purchasers understand and agree that no officer, director, employee, or salesman of Optimum Balance Products Ltd has any authority to make any statement contrary to the terms of this agreement. On the contrary Optimum Balance Products Ltd disavows any statement contrary to what is herein above written.

Optimum Balance Products Ltd is constantly seeking ways to improve the specification, design and production of its parts and alterations take place continually. Whilst every care is made to produce up to date literature, photographs within this brochure are for guidance only, products contained within these photographs may be subject to change without prior notice, therefore this brochure should not be regarded as an infallible guide to current specifications and or prices, nor does it constitute an offer for the sale of any particular item. Therefore, prices may be changed without prior notification to the purchaser and/or his agent.

Any reference in this brochure to speed or performance should not be taken as an encouragement to drive either dangerously or at speeds in excess of the national limit.

For full terms & conditions please visit our website **www.obpltd.com**



+44 (0)1487 812 301



sales@obpltd.com



obpltd.com



+44 (0)1487 812 301



sales@obpltd.com



obpltd.com

obp Motorsport

Longlands Lakes, Uggmere Court Road
Ramsey Heights, Nr Peterborough PE26 2RQ

Tel: **+44 (0)1487 812 301** Email: **sales@obpltd.com**

www.obpgroup.co.uk



obpMotorsport



obpmotorsport